

Anti-ROR beta Rabbit Monoclonal Antibody
Catalog # ABO15690**Specification**

Anti-ROR beta Rabbit Monoclonal Antibody - Product Information

Application	WB
Primary Accession	Q92753
Host	Rabbit
Isotype	IgG
Reactivity	Human, Mouse
Clonality	Monoclonal
Format	Liquid

Description

Anti-ROR beta Rabbit Monoclonal Antibody . Tested in WB application. This antibody reacts with Human, Mouse.

Anti-ROR beta Rabbit Monoclonal Antibody - Additional Information

Gene ID 6096

Other Names

Nuclear receptor ROR-beta, Nuclear receptor RZR-beta, Nuclear receptor subfamily 1 group F member 2, Retinoid-related orphan receptor-beta, RORB, NR1F2, RZRB

Calculated MW

53 kDa KDa

Application Details

WB 1:500-1:2000

Contents

Rabbit IgG in phosphate buffered saline, pH 7.4, 150mM NaCl, 0.02% sodium azide and 50% glycerol, 0.4-0.5mg/ml BSA.

Immunogen

A synthesized peptide derived from human ROR beta

Purification

Affinity-chromatography

Storage

Store at -20°C for one year. For short term storage and frequent use, store at 4°C for up to one month. Avoid repeated freeze-thaw cycles.

Anti-ROR beta Rabbit Monoclonal Antibody - Protein Information

Name RORB

Synonyms NR1F2, RZRB**Function**

Nuclear receptor that binds DNA as a monomer to ROR response elements (RORE) containing a single core motif half-site 5'-AGGTCA-3' preceded by a short A-T-rich sequence. Considered to have intrinsic transcriptional activity, have some natural ligands such as all-trans retinoic acid (ATRA) and other retinoids which act as inverse agonists repressing the transcriptional activity. Required for normal postnatal development of rod and cone photoreceptor cells. Modulates rod photoreceptors differentiation at least by inducing the transcription factor NRL-mediated pathway. In cone photoreceptor cells, regulates transcription of OPN1SW. Involved in the regulation of the period length and stability of the circadian rhythm. May control cytoarchitectural patterning of neocortical neurons during development. May act in a dose-dependent manner to regulate barrel formation upon innervation of layer IV neurons by thalamocortical axons. May play a role in the suppression of osteoblastic differentiation through the inhibition of RUNX2 transcriptional activity (By similarity).

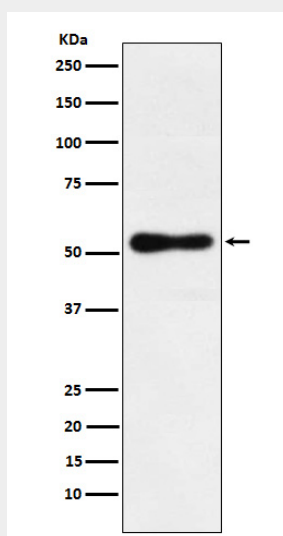
Cellular Location

Nucleus, nucleoplasm

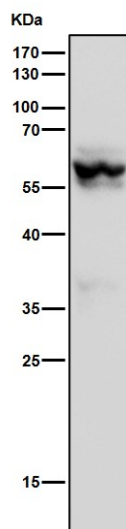
Anti-ROR beta Rabbit Monoclonal Antibody - Protocols

Provided below are standard protocols that you may find useful for product applications.

- [Western Blot](#)
- [Blocking Peptides](#)
- [Dot Blot](#)
- [Immunohistochemistry](#)
- [Immunofluorescence](#)
- [Immunoprecipitation](#)
- [Flow Cytometry](#)
- [Cell Culture](#)

Anti-ROR beta Rabbit Monoclonal Antibody - Images

Western blot analysis of ROR beta expression in HepG2 cell lysate.



All lanes use the Antibody at 1:1K dilution for 1 hour at room temperature.