

Anti-IGFBP1 Rabbit Monoclonal Antibody Catalog # ABO15692

Specification

Anti-IGFBP1 Rabbit Monoclonal Antibody - Product Information

Application	WB
Primary Accession	P08833
Host	Rabbit
Isotype	IgG
Reactivity	Rat, Human, Mouse
Clonality	Monoclonal
Format	Liquid

Description

Anti-IGFBP1 Rabbit Monoclonal Antibody . Tested in WB application. This antibody reacts with Human, Mouse, Rat.

Anti-IGFBP1 Rabbit Monoclonal Antibody - Additional Information

Gene ID 3484

Other Names

Insulin-like growth factor-binding protein 1, IBP-1, IGF-binding protein 1, IGFBP-1, Placental protein 12, PP12, IGFBP1, IBP1

Calculated MW

30 kDa KDa

Application Details

WB 1:500-1:2000

Contents

Rabbit IgG in phosphate buffered saline, pH 7.4, 150mM NaCl, 0.02% sodium azide and 50% glycerol, 0.4-0.5mg/ml BSA.

Immunogen

A synthesized peptide derived from human IGFBP1

Purification

Affinity-chromatography

Storage

Store at -20°C for one year. For short term storage and frequent use, store at 4°C for up to one month. Avoid repeated freeze-thaw cycles.

Anti-IGFBP1 Rabbit Monoclonal Antibody - Protein Information

Name IGFBP1

Synonyms IBP1

Function

Multifunctional protein that plays a critical role in regulating the availability of IGFs such as IGF1 and IGF2 to their receptors and thereby regulates IGF-mediated cellular processes including cell migration, proliferation, differentiation or apoptosis in a cell-type specific manner (PubMed:11397844, PubMed:15972819). Also plays a positive role in cell migration by interacting with integrin ITGA5:ITGB1 through its RGD motif (PubMed:7504269). Mechanistically, binding to integrins leads to activation of focal adhesion kinase/PTK2 and stimulation of the mitogen-activated protein kinase (MAPK) pathway (PubMed:11397844). Regulates cardiomyocyte apoptosis by suppressing HIF-1alpha/HIF1A ubiquitination and subsequent degradation (By similarity).

Cellular Location

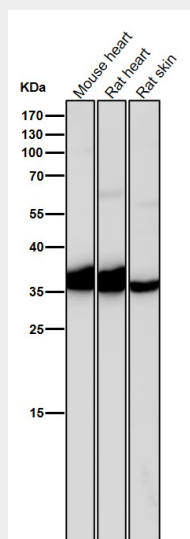
Secreted.

Anti-IGFBP1 Rabbit Monoclonal Antibody - Protocols

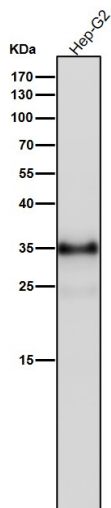
Provided below are standard protocols that you may find useful for product applications.

- [Western Blot](#)
- [Blocking Peptides](#)
- [Dot Blot](#)
- [Immunohistochemistry](#)
- [Immunofluorescence](#)
- [Immunoprecipitation](#)
- [Flow Cytometry](#)
- [Cell Culture](#)

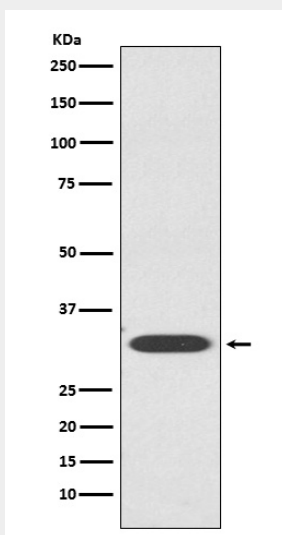
Anti-IGFBP1 Rabbit Monoclonal Antibody - Images



All lanes use the Antibody at 1:2K dilution for 1 hour at room temperature.



All lanes use the Antibody at 1:2K dilution for 1 hour at room temperature.



Western blot analysis of IGFBP1 expression in HepG2 cell lysate.