

Anti-Calpain S1 Rabbit Monoclonal Antibody Catalog # ABO15698

Specification

Anti-Calpain S1 Rabbit Monoclonal Antibody - Product Information

Application	WB, IHC, IF, ICC, FC
Primary Accession	P04632
Host	Rabbit
Isotype	IgG
Reactivity	Rat, Human, Mouse
Clonality	Monoclonal
Format	Liquid

Description

Anti-Calpain S1 Rabbit Monoclonal Antibody . Tested in WB, IHC, ICC/IF, Flow Cytometry applications. This antibody reacts with Human, Mouse, Rat.

Anti-Calpain S1 Rabbit Monoclonal Antibody - Additional Information

Gene ID 826

Other Names

Calpain small subunit 1, CSS1, Calcium-activated neutral proteinase small subunit, CANP small subunit, Calcium-dependent protease small subunit, CDPS, Calcium-dependent protease small subunit 1, Calpain regulatory subunit, CAPNS1, CAPN4, CAPNS

Calculated MW

28 kDa KDa

Application Details

WB 1:500-1:2000
IHC 1:50-1:200
ICC/IF 1:50-1:200
FC 1:50

Contents

Rabbit IgG in phosphate buffered saline, pH 7.4, 150mM NaCl, 0.02% sodium azide and 50% glycerol, 0.4-0.5mg/ml BSA.

Immunogen

A synthesized peptide derived from human Calpain S1

Purification

Affinity-chromatography

Storage

Store at -20°C for one year. For short term storage and frequent use, store at 4°C for up to one month. Avoid repeated freeze-thaw cycles.

Anti-Calpain S1 Rabbit Monoclonal Antibody - Protein Information

Name CAPNS1

Synonyms CAPN4, CAPNS

Function

Regulatory subunit of the calcium-regulated non-lysosomal thiol-protease which catalyzes limited proteolysis of substrates involved in cytoskeletal remodeling and signal transduction. Essential for embryonic development (By similarity).

Cellular Location

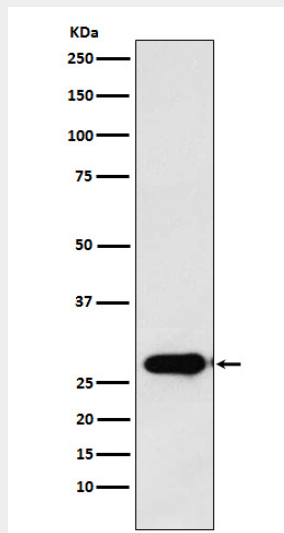
Cytoplasm. Cell membrane. Note=Translocates to the plasma membrane upon calcium binding.

Anti-Calpain S1 Rabbit Monoclonal Antibody - Protocols

Provided below are standard protocols that you may find useful for product applications.

- [Western Blot](#)
- [Blocking Peptides](#)
- [Dot Blot](#)
- [Immunohistochemistry](#)
- [Immunofluorescence](#)
- [Immunoprecipitation](#)
- [Flow Cytometry](#)
- [Cell Culture](#)

Anti-Calpain S1 Rabbit Monoclonal Antibody - Images



Western blot analysis of Calpain S1 expression in T47D cell lysate.