

Anti-PHAPI2 / APRIL Rabbit Monoclonal Antibody
Catalog # ABO15702**Specification**

Anti-PHAPI2 / APRIL Rabbit Monoclonal Antibody - Product Information

Application	WB, IHC, IF, ICC, FC
Primary Accession	Q92688
Host	Rabbit
Isotype	IgG
Reactivity	Rat, Human, Mouse
Clonality	Monoclonal
Format	Liquid

Description

Anti-PHAPI2 / APRIL Rabbit Monoclonal Antibody . Tested in WB, IHC, ICC/IF, Flow Cytometry applications. This antibody reacts with Human, Mouse, Rat.

Anti-PHAPI2 / APRIL Rabbit Monoclonal Antibody - Additional Information

Gene ID 10541

Other Names

Acidic leucine-rich nuclear phosphoprotein 32 family member B, Acidic protein rich in leucines, Putative HLA-DR-associated protein I-2, PHAPI2, Silver-stainable protein SSP29, ANP32B, APRIL, PHAPI2

Calculated MW

29 kDa KDa

Application Details

WB 1:500-1:1000
IHC 1:50-1:200
ICC/IF 1:50-1:200
FC 1:100

Contents

Rabbit IgG in phosphate buffered saline, pH 7.4, 150mM NaCl, 0.02% sodium azide and 50% glycerol, 0.4-0.5mg/ml BSA.

Immunogen

A synthesized peptide derived from human PHAPI2 / APRIL

Purification

Affinity-chromatography

Storage

Store at -20°C for one year. For short term storage and frequent use, store at 4°C for up to one month. Avoid repeated freeze-thaw cycles.

Anti-PHAPI2 / APRIL Rabbit Monoclonal Antibody - Protein Information

Name ANP32B

Synonyms APRIL, PHAPI2

Function

Multifunctional protein that is involved in the regulation of many processes including cell proliferation, apoptosis, cell cycle progression or transcription (PubMed:18039846, PubMed:20015864). Regulates the proliferation of neuronal stem cells, differentiation of leukemic cells and progression from G1 to S phase of the cell cycle. As negative regulator of caspase-3-dependent apoptosis, may act as an antagonist of ANP32A in regulating tissue homeostasis (PubMed:20015864). Exhibits histone chaperone properties, able to recruit histones to certain promoters, thus regulating the transcription of specific genes (PubMed:18039846, PubMed:20538007). Also plays an essential role in the nucleocytoplasmic transport of specific mRNAs via the uncommon nuclear mRNA export receptor XPO1/CRM1 (PubMed:17178712). Participates in the regulation of adequate adaptive immune responses by acting on mRNA expression and cell proliferation (By similarity).

Cellular Location

[Isoform 1]: Nucleus. Cytoplasm Note=Accumulates in the nuclei at the S phase.

Tissue Location

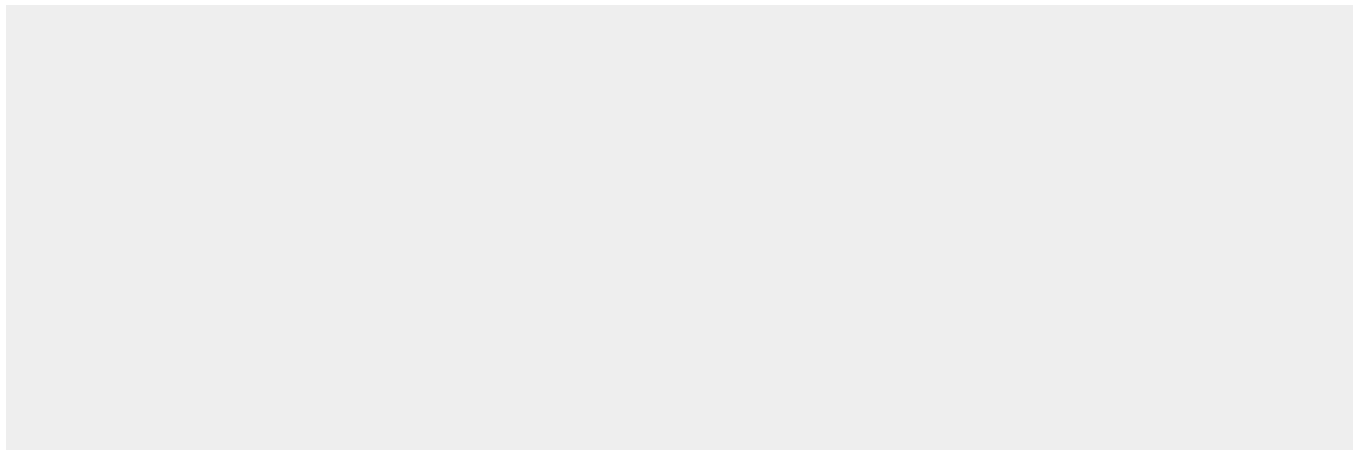
Expressed in heart, lung, pancreas, prostate and in spleen, thymus and placenta.

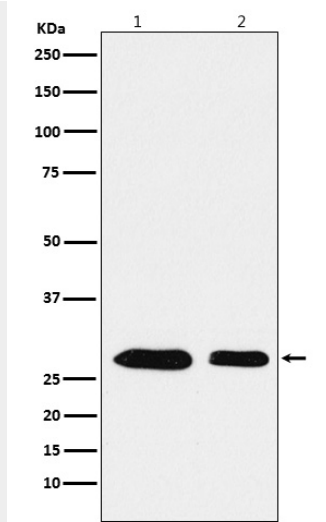
Anti-PHAPI2 / APRIL Rabbit Monoclonal Antibody - Protocols

Provided below are standard protocols that you may find useful for product applications.

- [Western Blot](#)
- [Blocking Peptides](#)
- [Dot Blot](#)
- [Immunohistochemistry](#)
- [Immunofluorescence](#)
- [Immunoprecipitation](#)
- [Flow Cytometry](#)
- [Cell Culture](#)

Anti-PHAPI2 / APRIL Rabbit Monoclonal Antibody - Images





Western blot analysis of PHAPI2 / APRIL expression in (1) Jurkat cell lysate; (2) RAW264.7 cell lysate.