

Anti-Bmf Rabbit Monoclonal Antibody
Catalog # ABO15707**Specification**

Anti-Bmf Rabbit Monoclonal Antibody - Product Information

Application	WB, FC
Primary Accession	Q96LC9
Host	Rabbit
Isotype	IgG
Reactivity	Rat, Human, Mouse
Clonality	Monoclonal
Format	Liquid

Description

Anti-Bmf Rabbit Monoclonal Antibody . Tested in WB, Flow Cytometry applications. This antibody reacts with Human, Mouse, Rat.

Anti-Bmf Rabbit Monoclonal Antibody - Additional Information

Gene ID 90427

Other Names

Bcl-2-modifying factor, BMF

Calculated MW

24 kDa KDa

Application Details

WB 1:500-1:2000
FC 1:50

Contents

Rabbit IgG in phosphate buffered saline, pH 7.4, 150mM NaCl, 0.02% sodium azide and 50% glycerol, 0.4-0.5mg/ml BSA.

Immunogen

A synthesized peptide derived from human Bmf

Purification

Affinity-chromatography

Storage

Store at -20°C for one year. For short term storage and frequent use, store at 4°C for up to one month. Avoid repeated freeze-thaw cycles.

Anti-Bmf Rabbit Monoclonal Antibody - Protein Information

Name BMF

Function

May play a role in apoptosis. Isoform 1 seems to be the main initiator.

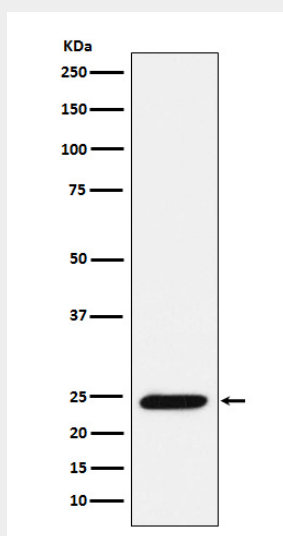
Tissue Location

Isoform 1 is mainly expressed in B-lymphoid cells. Isoform 2 and isoform 3 are mainly expressed in B-CLL and normal B- cells.

Anti-Bmf Rabbit Monoclonal Antibody - Protocols

Provided below are standard protocols that you may find useful for product applications.

- [Western Blot](#)
- [Blocking Peptides](#)
- [Dot Blot](#)
- [Immunohistochemistry](#)
- [Immunofluorescence](#)
- [Immunoprecipitation](#)
- [Flow Cytometry](#)
- [Cell Culture](#)

Anti-Bmf Rabbit Monoclonal Antibody - Images

Western blot analysis of Bmf expression in Ramos cell lysate.