

Anti-MAD1 Rabbit Monoclonal Antibody
Catalog # ABO15716**Specification**

Anti-MAD1 Rabbit Monoclonal Antibody - Product Information

Application	WB
Primary Accession	Q9Y6D9
Host	Rabbit
Isotype	IgG
Reactivity	Rat, Human, Mouse
Clonality	Monoclonal
Format	Liquid

Description

Anti-MAD1 Rabbit Monoclonal Antibody . Tested in WB application. This antibody reacts with Human, Mouse, Rat.

Anti-MAD1 Rabbit Monoclonal Antibody - Additional Information

Gene ID 8379

Other Names

Mitotic spindle assembly checkpoint protein MAD1, Mitotic arrest deficient 1-like protein 1, MAD1-like protein 1, Mitotic checkpoint MAD1 protein homolog, HsMAD1, hMAD1, Tax-binding protein 181, MAD1L1, MAD1, TXBP181

Calculated MW

83 kDa KDa

Application Details

WB 1:500-1:2000

Contents

Rabbit IgG in phosphate buffered saline, pH 7.4, 150mM NaCl, 0.02% sodium azide and 50% glycerol, 0.4-0.5mg/ml BSA.

Immunogen

A synthesized peptide derived from human MAD1

Purification

Affinity-chromatography

Storage

Store at -20°C for one year. For short term storage and frequent use, store at 4°C for up to one month. Avoid repeated freeze-thaw cycles.

Anti-MAD1 Rabbit Monoclonal Antibody - Protein Information

Name MAD1L1

Synonyms MAD1, TXBP181

Function

Component of the spindle-assembly checkpoint that prevents the onset of anaphase until all chromosomes are properly aligned at the metaphase plate (PubMed:10049595, PubMed:20133940, PubMed:29162720). Forms a heterotetrameric complex with the closed conformation form of MAD2L1 (C-MAD2) at unattached kinetochores during prometaphase, recruits an open conformation of MAD2L1 (O-MAD2) and promotes the conversion of O-MAD2 to C-MAD2, which ensures mitotic checkpoint signaling (PubMed:29162720).

Cellular Location

Nucleus. Chromosome, centromere, kinetochore. Nucleus envelope Cytoplasm, cytoskeleton, microtubule organizing center, centrosome. Cytoplasm, cytoskeleton, spindle. Cytoplasm, cytoskeleton, spindle pole. Note=Co- localizes with TPR at the nucleus envelope during interphase and throughout the cell cycle (PubMed:18981471, PubMed:22351768). From the beginning to the end of mitosis, it is seen to move from a diffusely nuclear distribution to the centrosome, to the spindle midzone and finally to the midbody (PubMed:9546394). Localizes to kinetochores during prometaphase (PubMed:22351768, PubMed:29162720). Does not localize to kinetochores during metaphase (PubMed:29162720) Colocalizes with NEK2 at the kinetochore (PubMed:14978040). Colocalizes with IK at spindle poles during metaphase and anaphase (PubMed:22351768).

Tissue Location

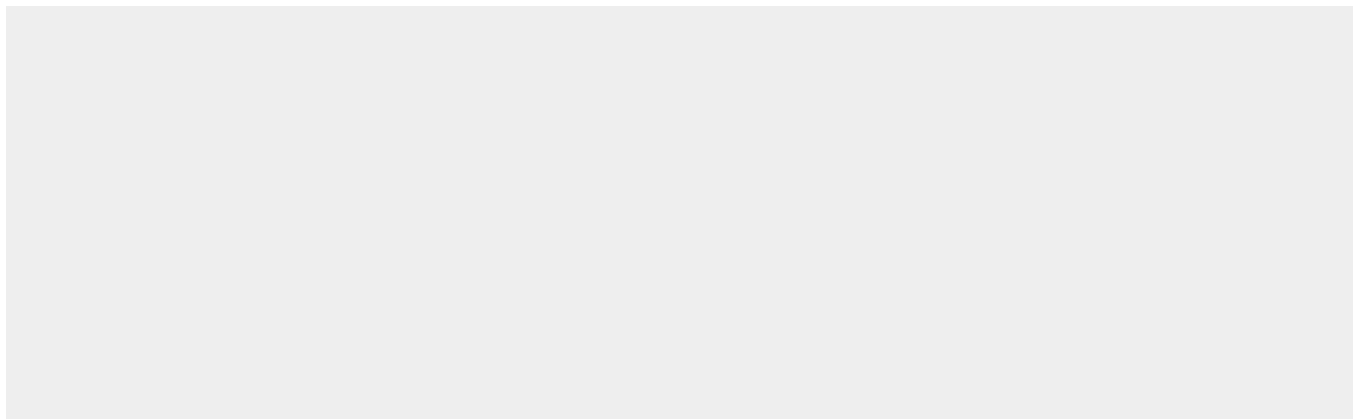
[Isoform 1]: Expressed in hepatocellular carcinomas and hepatoma cell lines (at protein level)

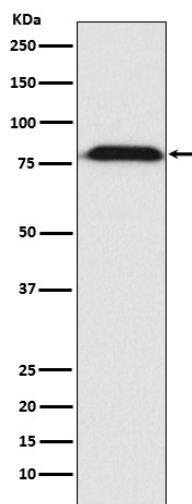
Anti-MAD1 Rabbit Monoclonal Antibody - Protocols

Provided below are standard protocols that you may find useful for product applications.

- [Western Blot](#)
- [Blocking Peptides](#)
- [Dot Blot](#)
- [Immunohistochemistry](#)
- [Immunofluorescence](#)
- [Immunoprecipitation](#)
- [Flow Cytometry](#)
- [Cell Culture](#)

Anti-MAD1 Rabbit Monoclonal Antibody - Images





Western blot analysis of MAD1 expression in A431 cell lysate.