

Anti-MYL9 Rabbit Monoclonal Antibody
Catalog # ABO15718**Specification**

Anti-MYL9 Rabbit Monoclonal Antibody - Product Information

Application	WB, IHC, IP
Primary Accession	P24844
Host	Rabbit
Isotype	IgG
Reactivity	Rat, Human, Mouse
Clonality	Monoclonal
Format	Liquid

Description

Anti-MYL9 Rabbit Monoclonal Antibody . Tested in WB, IHC, IP applications. This antibody reacts with Human, Mouse, Rat.

Anti-MYL9 Rabbit Monoclonal Antibody - Additional Information

Gene ID 10398

Other Names

Myosin regulatory light polypeptide 9, 20 kDa myosin light chain, LC20, MLC-2C, Myosin RLC, Myosin regulatory light chain 2, smooth muscle isoform, Myosin regulatory light chain 9, Myosin regulatory light chain MRLC1, MYL9, MLC2, MRLC1, MYRL2

Calculated MW

20 kDa KDa

Application Details

WB 1:500-1:2000
IHC 1:50-1:200
IP 1:50

Contents

Rabbit IgG in phosphate buffered saline, pH 7.4, 150mM NaCl, 0.02% sodium azide and 50% glycerol, 0.4-0.5mg/ml BSA.

Immunogen

A synthesized peptide derived from human MYL9

Purification

Affinity-chromatography

Storage

Store at -20°C for one year. For short term storage and frequent use, store at 4°C for up to one month. Avoid repeated freeze-thaw cycles.

Anti-MYL9 Rabbit Monoclonal Antibody - Protein Information

Name MYL9

Synonyms MLC2, MRLC1, MYRL2

Function

Myosin regulatory subunit that plays an important role in regulation of both smooth muscle and nonmuscle cell contractile activity via its phosphorylation. Implicated in cytokinesis, receptor capping, and cell locomotion (PubMed:11942626, PubMed:2526655). In myoblasts, may regulate PIEZO1-dependent cortical actomyosin assembly involved in myotube formation (By similarity).

Cellular Location

Cytoplasm, cytoskeleton {ECO:0000250|UniProtKB:Q9CQ19}. Cytoplasm, cell cortex {ECO:0000250|UniProtKB:Q9CQ19}. Note=Colocalizes with F-actin, MYH9 and PIEZO1 at the actomyosin cortex in myoblasts {ECO:0000250|UniProtKB:Q9CQ19}

Tissue Location

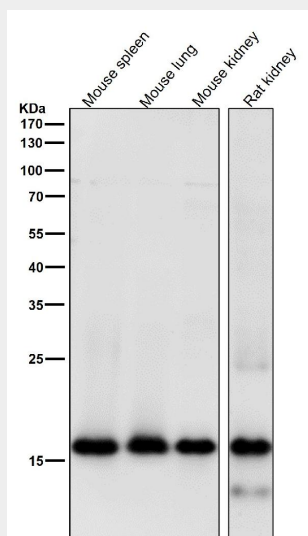
Smooth muscle tissues and in some, but not all, nonmuscle cells.

Anti-MYL9 Rabbit Monoclonal Antibody - Protocols

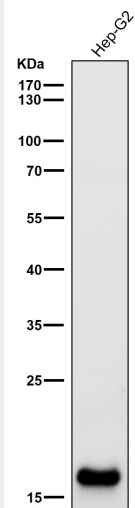
Provided below are standard protocols that you may find useful for product applications.

- [Western Blot](#)
- [Blocking Peptides](#)
- [Dot Blot](#)
- [Immunohistochemistry](#)
- [Immunofluorescence](#)
- [Immunoprecipitation](#)
- [Flow Cytometry](#)
- [Cell Culture](#)

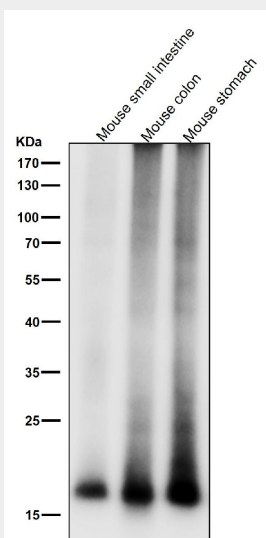
Anti-MYL9 Rabbit Monoclonal Antibody - Images



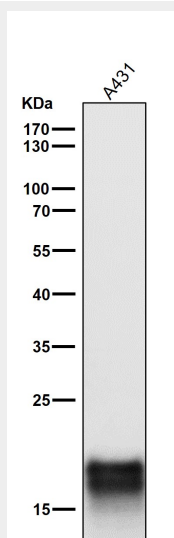
All lanes use the Antibody at 1:1k dilution for 1 hour at room temperature.



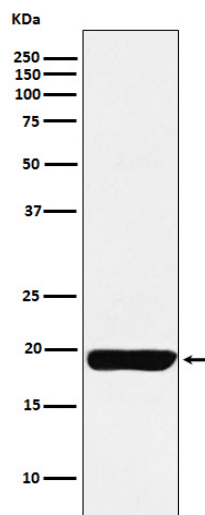
All lanes use the Antibody at 1:1k dilution for 1 hour at room temperature.



All lanes use the Antibody at 1:1k dilution for 1 hour at room temperature.



All lanes use the Antibody at 1:1k dilution for 1 hour at room temperature.



Western blot analysis of MYL9 expression in Human uterus lysate.