

Anti-AHA1 Rabbit Monoclonal Antibody
Catalog # ABO15721**Specification**

Anti-AHA1 Rabbit Monoclonal Antibody - Product Information

Application	WB, IP
Primary Accession	O95433
Host	Rabbit
Isotype	IgG
Reactivity	Rat, Human, Mouse
Clonality	Monoclonal
Format	Liquid

Description

Anti-AHA1 Rabbit Monoclonal Antibody . Tested in WB, IP applications. This antibody reacts with Human, Mouse, Rat.

Anti-AHA1 Rabbit Monoclonal Antibody - Additional Information

Gene ID 10598

Other Names

Activator of 90 kDa heat shock protein ATPase homolog 1, AHA1, p38, AHSA1, C14orf3

Calculated MW

40 kDa KDa

Application Details

WB 1:500-1:2000
IP 1:40

Contents

Rabbit IgG in phosphate buffered saline, pH 7.4, 150mM NaCl, 0.02% sodium azide and 50% glycerol, 0.4-0.5mg/ml BSA.

Immunogen

A synthesized peptide derived from human AHA1

Purification

Affinity-chromatography

Storage

Store at -20°C for one year. For short term storage and frequent use, store at 4°C for up to one month. Avoid repeated freeze-thaw cycles.

Anti-AHA1 Rabbit Monoclonal Antibody - Protein Information

Name AHSA1

Synonyms C14orf3**Function**

Acts as a co-chaperone of HSP90AA1 (PubMed:29127155). Activates the ATPase activity of HSP90AA1 leading to increase in its chaperone activity (PubMed:29127155). Competes with the inhibitory co- chaperone FNIP1 for binding to HSP90AA1, thereby providing a reciprocal regulatory mechanism for chaperoning of client proteins (PubMed:27353360). Competes with the inhibitory co-chaperone TSC1 for binding to HSP90AA1, thereby providing a reciprocal regulatory mechanism for chaperoning of client proteins (PubMed:29127155).

Cellular Location

Cytoplasm, cytosol. Endoplasmic reticulum. Note=May transiently interact with the endoplasmic reticulum

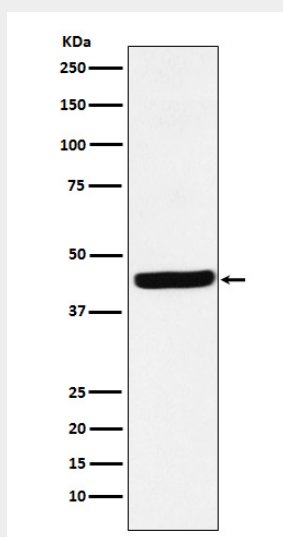
Tissue Location

Expressed in numerous tissues, including brain, heart, skeletal muscle and kidney and, at lower levels, liver and placenta.

Anti-AHA1 Rabbit Monoclonal Antibody - Protocols

Provided below are standard protocols that you may find useful for product applications.

- [Western Blot](#)
- [Blocking Peptides](#)
- [Dot Blot](#)
- [Immunohistochemistry](#)
- [Immunofluorescence](#)
- [Immunoprecipitation](#)
- [Flow Cytometry](#)
- [Cell Culture](#)

Anti-AHA1 Rabbit Monoclonal Antibody - Images

Western blot analysis of AHA1 expression in HepG2 cell lysate.