

Anti-REA Rabbit Monoclonal Antibody
Catalog # ABO15724**Specification**

Anti-REA Rabbit Monoclonal Antibody - Product Information

Application	WB, IHC, IF, ICC
Primary Accession	Q99623
Host	Rabbit
Isotype	IgG
Reactivity	Rat, Human, Mouse
Clonality	Monoclonal
Format	Liquid

Description

Anti-REA Rabbit Monoclonal Antibody . Tested in WB, IHC, ICC/IF applications. This antibody reacts with Human, Mouse, Rat.

Anti-REA Rabbit Monoclonal Antibody - Additional Information

Gene ID 11331

Other Names

Prohibitin-2, B-cell receptor-associated protein BAP37, D-prohibitin, Repressor of estrogen receptor activity, PHB2 {ECO:0000312|EMBL:AAH14766.1, ECO:0000312|HGNC:HGNC:30306}

Calculated MW

33 kDa KDa

Application Details

WB 1:1000-1:5000
IHC 1:50-1:200
ICC/IF 1:50-1:200

Contents

Rabbit IgG in phosphate buffered saline, pH 7.4, 150mM NaCl, 0.02% sodium azide and 50% glycerol, 0.4-0.5mg/ml BSA.

Immunogen

A synthesized peptide derived from human REA

Purification

Affinity-chromatography

Storage

Store at -20°C for one year. For short term storage and frequent use, store at 4°C for up to one month. Avoid repeated freeze-thaw cycles.

Anti-REA Rabbit Monoclonal Antibody - Protein Information

Name PHB2 {ECO:0000312|EMBL:AAH14766.1, ECO:0000312|HGNC:HGNC:30306}

Function

Protein with pleiotropic attributes mediated in a cell- compartment- and tissue-specific manner, which include the plasma membrane-associated cell signaling functions, mitochondrial chaperone, and transcriptional co-regulator of transcription factors and sex steroid hormones in the nucleus.

Cellular Location

Mitochondrion inner membrane. Cytoplasm. Nucleus. Cell membrane Note=Localizes within both nucleus and cytoplasm in proliferative primary myoblasts and mostly within the nucleus of differentiated primary myoblasts. [Isoform 2]: Mitochondrion inner membrane

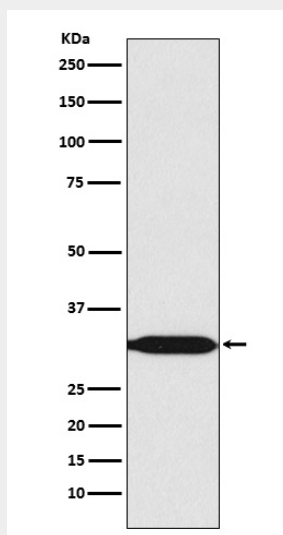
Tissue Location

Expressed in myoblasts.

Anti-REA Rabbit Monoclonal Antibody - Protocols

Provided below are standard protocols that you may find useful for product applications.

- [Western Blot](#)
- [Blocking Peptides](#)
- [Dot Blot](#)
- [Immunohistochemistry](#)
- [Immunofluorescence](#)
- [Immunoprecipitation](#)
- [Flow Cytometry](#)
- [Cell Culture](#)

Anti-REA Rabbit Monoclonal Antibody - Images

Western blot analysis of REA expression in HeLa cell lysate.