

Anti-Legumain Rabbit Monoclonal Antibody
Catalog # ABO15728**Specification****Anti-Legumain Rabbit Monoclonal Antibody - Product Information**

Application	WB
Primary Accession	Q99538
Host	Rabbit
Isotype	IgG
Reactivity	Rat, Human, Mouse
Clonality	Monoclonal
Format	Liquid

Description

Anti-Legumain Rabbit Monoclonal Antibody . Tested in WB application. This antibody reacts with Human, Mouse, Rat.

Anti-Legumain Rabbit Monoclonal Antibody - Additional Information

Gene ID 5641

Other Names

Legumain, 3.4.22.34, Asparaginyl endopeptidase, AEP, Protease, cysteine 1, LGMN {ECO:0000303|PubMed:30425301, ECO:0000312|HGNC:HGNC:9472}

Calculated MW

36 kDa, 57 kDa KDa

Application Details

WB 1:500-1:2000

Contents

Rabbit IgG in phosphate buffered saline, pH 7.4, 150mM NaCl, 0.02% sodium azide and 50% glycerol, 0.4-0.5mg/ml BSA.

Immunogen

A synthesized peptide derived from human Legumain

Purification

Affinity-chromatography

Storage

Store at -20°C for one year. For short term storage and frequent use, store at 4°C for up to one month. Avoid repeated freeze-thaw cycles.

Anti-Legumain Rabbit Monoclonal Antibody - Protein Information

Name LGMN {ECO:0000303|PubMed:30425301, ECO:0000312|HGNC:HGNC:9472}

Function

Has a strict specificity for hydrolysis of asparaginyl bonds (PubMed:23776206). Can also cleave aspartyl bonds slowly, especially under acidic conditions (PubMed:23776206). Involved in the processing of proteins for MHC class II antigen presentation in the lysosomal/endosomal system (PubMed:9872320). Also involved in MHC class I antigen presentation in cross-presenting dendritic cells by mediating cleavage and maturation of Perforin-2 (MPEG1), thereby promoting antigen translocation in the cytosol (By similarity). Required for normal lysosomal protein degradation in renal proximal tubules (By similarity). Required for normal degradation of internalized EGFR (By similarity). Plays a role in the regulation of cell proliferation via its role in EGFR degradation (By similarity).

Cellular Location

Lysosome.

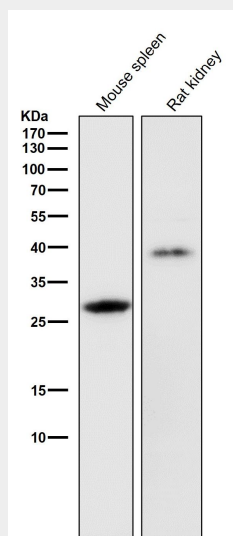
Tissue Location

Ubiquitous. Particularly abundant in kidney, heart and placenta.

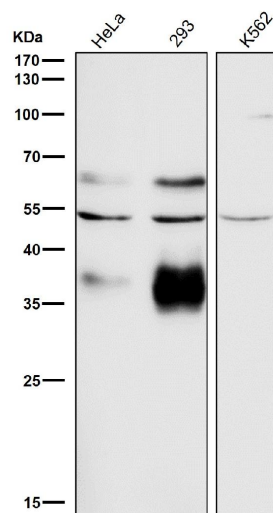
Anti-Legumain Rabbit Monoclonal Antibody - Protocols

Provided below are standard protocols that you may find useful for product applications.

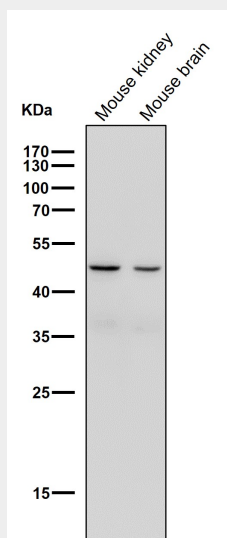
- [Western Blot](#)
- [Blocking Peptides](#)
- [Dot Blot](#)
- [Immunohistochemistry](#)
- [Immunofluorescence](#)
- [Immunoprecipitation](#)
- [Flow Cytometry](#)
- [Cell Culture](#)

Anti-Legumain Rabbit Monoclonal Antibody - Images

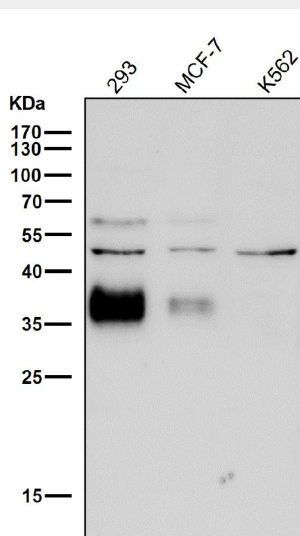
All lanes use the Antibody at 1:1K dilution for 1 hour at room temperature.



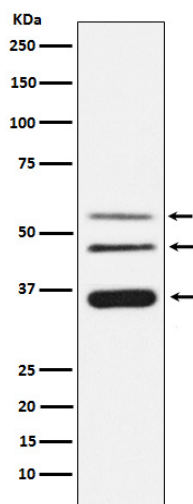
All lanes use the Antibody at 1:1K dilution for 1 hour at room temperature.



All lanes use the Antibody at 1:1W dilution for 1 hour at room temperature.



All lanes use the Antibody at 1:1W dilution for 1 hour at room temperature.



Western blot analysis of Legumain expression in HeLa cell lysate.