

Anti-Renalase Rabbit Monoclonal Antibody
Catalog # ABO15731**Specification**

Anti-Renalase Rabbit Monoclonal Antibody - Product Information

Application	WB, IHC
Primary Accession	Q5VYX0
Host	Rabbit
Isotype	IgG
Reactivity	Rat, Human, Mouse
Clonality	Monoclonal
Format	Liquid

Description

Anti-Renalase Rabbit Monoclonal Antibody . Tested in WB, IHC applications. This antibody reacts with Human, Mouse, Rat.

Anti-Renalase Rabbit Monoclonal Antibody - Additional Information

Gene ID 55328

Other Names

Renalase, 1.6.3.5, Monoamine oxidase-C, MAO-C, RNLS, C10orf59

Calculated MW

42 kDa KDa

Application Details

WB 1:500-1:2000
IHC 1:50-1:200

Contents

Rabbit IgG in phosphate buffered saline, pH 7.4, 150mM NaCl, 0.02% sodium azide and 50% glycerol, 0.4-0.5mg/ml BSA.

Immunogen

A synthesized peptide derived from human Renalase

Purification

Affinity-chromatography

Storage

Store at -20°C for one year. For short term storage and frequent use, store at 4°C for up to one month. Avoid repeated freeze-thaw cycles.

Anti-Renalase Rabbit Monoclonal Antibody - Protein Information

Name RNLS

Synonyms C10orf59**Function**

Catalyzes the oxidation of the less abundant 1,2-dihydro- beta-NAD(P) and 1,6-dihydro-beta-NAD(P) to form beta-NAD(P)(+). The enzyme hormone is secreted by the kidney, and circulates in blood and modulates cardiac function and systemic blood pressure. Lowers blood pressure in vivo by decreasing cardiac contractility and heart rate and preventing a compensatory increase in peripheral vascular tone, suggesting a causal link to the increased plasma catecholamine and heightened cardiovascular risk. High concentrations of catecholamines activate plasma renalase and promotes its secretion and synthesis.

Cellular Location

Secreted.

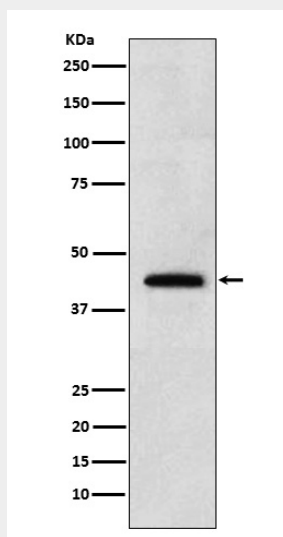
Tissue Location

Secreted into the blood by the kidney. Highly expressed in the kidney, expressed at lower level in heart, skeletal muscle and small intestine. Its plasma concentration is markedly reduced in patients with end-stage renal disease, as compared with healthy subjects.

Anti-Renalase Rabbit Monoclonal Antibody - Protocols

Provided below are standard protocols that you may find useful for product applications.

- [Western Blot](#)
- [Blocking Peptides](#)
- [Dot Blot](#)
- [Immunohistochemistry](#)
- [Immunofluorescence](#)
- [Immunoprecipitation](#)
- [Flow Cytometry](#)
- [Cell Culture](#)

Anti-Renalase Rabbit Monoclonal Antibody - Images

Western blot analysis of Renalase expression in 293T cell lysate.