

**Anti-CAPG Rabbit Monoclonal Antibody**  
**Catalog # ABO15732****Specification**

---

**Anti-CAPG Rabbit Monoclonal Antibody - Product Information**

Application	WB
Primary Accession	<a href="#">P40121</a>
Host	Rabbit
Isotype	IgG
Reactivity	Rat, Human, Mouse
Clonality	Monoclonal
Format	Liquid

**Description**

Anti-CAPG Rabbit Monoclonal Antibody . Tested in WB application. This antibody reacts with Human, Mouse, Rat.

**Anti-CAPG Rabbit Monoclonal Antibody - Additional Information**

**Gene ID** 822

**Other Names**

Macrophage-capping protein, Actin regulatory protein CAP-G, CAPG, AFCP, MCP

**Calculated MW**

38 kDa KDa

**Application Details**

WB 1:500-1:2000

**Contents**

Rabbit IgG in phosphate buffered saline, pH 7.4, 150mM NaCl, 0.02% sodium azide and 50% glycerol, 0.4-0.5mg/ml BSA.

**Immunogen**

A synthesized peptide derived from human CAPG

**Purification**

Affinity-chromatography

**Storage**

**Store at -20°C for one year. For short term storage and frequent use, store at 4°C for up to one month. Avoid repeated freeze-thaw cycles.**

**Anti-CAPG Rabbit Monoclonal Antibody - Protein Information**

**Name** CAPG

**Synonyms** AFCP, MCP**Function**

Calcium-sensitive protein which reversibly blocks the barbed ends of actin filaments but does not sever preformed actin filaments. May play an important role in macrophage function. May play a role in regulating cytoplasmic and/or nuclear structures through potential interactions with actin. May bind DNA.

**Cellular Location**

Nucleus. Cytoplasm Melanosome. Cell projection, lamellipodium

{ECO:0000250|UniProtKB:P24452}. Cell projection, ruffle {ECO:0000250|UniProtKB:P24452}.

Note=In macrophages, may be predominantly cytoplasmic. Nuclear localization was observed in fibroblasts. In macrophages, present at the membrane-cytoplasm interface. In activated macrophages, concentrated in the ruffles of the leading lamellipodia.

{ECO:0000250|UniProtKB:P24452}

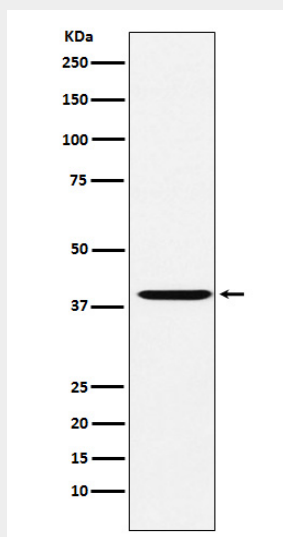
**Tissue Location**

Macrophages and macrophage-like cells.

**Anti-CAPG Rabbit Monoclonal Antibody - Protocols**

Provided below are standard protocols that you may find useful for product applications.

- [Western Blot](#)
- [Blocking Peptides](#)
- [Dot Blot](#)
- [Immunohistochemistry](#)
- [Immunofluorescence](#)
- [Immunoprecipitation](#)
- [Flow Cytometry](#)
- [Cell Culture](#)

**Anti-CAPG Rabbit Monoclonal Antibody - Images**

Western blot analysis of CAPG expression in HeLa cell lysate.