

**Anti-IDH1 Rabbit Monoclonal Antibody**  
**Catalog # ABO15734****Specification**

---

**Anti-IDH1 Rabbit Monoclonal Antibody - Product Information**

Application	WB, IHC, IP
Primary Accession	<a href="#">O75874</a>
Host	Rabbit
Isotype	IgG
Reactivity	Rat, Human, Mouse
Clonality	Monoclonal
Format	Liquid

**Description**

Anti-IDH1 Rabbit Monoclonal Antibody . Tested in WB, IHC, IP applications. This antibody reacts with Human, Mouse, Rat.

**Anti-IDH1 Rabbit Monoclonal Antibody - Additional Information**

**Gene ID** 3417

**Other Names**

Isocitrate dehydrogenase [NADP] cytoplasmic, IDH, IDH1, 1.1.1.42, Cytosolic NADP-isocitrate dehydrogenase, IDPc, NADP(+)-specific ICDH, Oxalosuccinate decarboxylase, IDH1, PICD

**Calculated MW**

47 kDa KDa

**Application Details**

WB 1:500-1:2000<br>IHC 1:50-1:200<br>IP 1:50

**Contents**

Rabbit IgG in phosphate buffered saline, pH 7.4, 150mM NaCl, 0.02% sodium azide and 50% glycerol, 0.4-0.5mg/ml BSA.

**Immunogen**

A synthesized peptide derived from human IDH1

**Purification**

Affinity-chromatography

**Storage**

**Store at -20°C for one year. For short term storage and frequent use, store at 4°C for up to one month. Avoid repeated freeze-thaw cycles.**

**Anti-IDH1 Rabbit Monoclonal Antibody - Protein Information**

**Name** IDH1

## Synonyms PICD

### Function

Catalyzes the NADP(+)-dependent oxidative decarboxylation of isocitrate (D-threo-isocitrate) to 2-ketoglutarate (2-oxoglutarate), which is required by other enzymes such as the phytanoyl-CoA dioxygenase (PubMed:<a href="http://www.uniprot.org/citations/10521434" target="\_blank">10521434</a>, PubMed:<a href="http://www.uniprot.org/citations/19935646" target="\_blank">19935646</a>). Plays a critical role in the generation of NADPH, an important cofactor in many biosynthesis pathways (PubMed:<a href="http://www.uniprot.org/citations/10521434" target="\_blank">10521434</a>). May act as a corneal epithelial crystallin and may be involved in maintaining corneal epithelial transparency (By similarity).

### Cellular Location

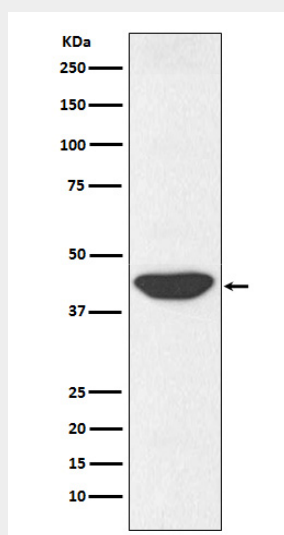
Cytoplasm, cytosol. Peroxisome

## Anti-IDH1 Rabbit Monoclonal Antibody - Protocols

Provided below are standard protocols that you may find useful for product applications.

- [Western Blot](#)
- [Blocking Peptides](#)
- [Dot Blot](#)
- [Immunohistochemistry](#)
- [Immunofluorescence](#)
- [Immunoprecipitation](#)
- [Flow Cytometry](#)
- [Cell Culture](#)

## Anti-IDH1 Rabbit Monoclonal Antibody - Images



Western blot analysis of IDH1 expression in HepG2 cell lysate.