

Anti-NAP1L1 Rabbit Monoclonal Antibody
Catalog # ABO15741**Specification**

Anti-NAP1L1 Rabbit Monoclonal Antibody - Product Information

| | |
|-------------------|------------------------|
| Application | WB, FC |
| Primary Accession | P55209 |
| Host | Rabbit |
| Isotype | IgG |
| Reactivity | Rat, Human, Mouse |
| Clonality | Monoclonal |
| Format | Liquid |

Description

Anti-NAP1L1 Rabbit Monoclonal Antibody . Tested in WB, Flow Cytometry applications. This antibody reacts with Human, Mouse, Rat.

Anti-NAP1L1 Rabbit Monoclonal Antibody - Additional Information

Gene ID 4673

Other Names

Nucleosome assembly protein 1-like 1, NAP-1-related protein, hNRP, NAP1L1, NRP

Calculated MW

52,60 kDa KDa

Application Details

WB 1:500-1:2000
FC 1:50

Contents

Rabbit IgG in phosphate buffered saline, pH 7.4, 150mM NaCl, 0.02% sodium azide and 50% glycerol, 0.4-0.5mg/ml BSA.

Immunogen

A synthesized peptide derived from human NAP1L1

Purification

Affinity-chromatography

Storage

Store at -20°C for one year. For short term storage and frequent use, store at 4°C for up to one month. Avoid repeated freeze-thaw cycles.

Anti-NAP1L1 Rabbit Monoclonal Antibody - Protein Information

Name NAP1L1

Synonyms NRP

Function

Histone chaperone that plays a role in the nuclear import of H2A-H2B and nucleosome assembly (PubMed:20002496, PubMed:21211722, PubMed:26841755). Also participates in several important DNA repair mechanisms: greatly enhances ERCC6-mediated chromatin remodeling which is essential for transcription-coupled nucleotide excision DNA repair (PubMed:28369616). Also stimulates homologous recombination (HR) by RAD51 and RAD54 which is essential in mitotic DNA double strand break (DSB) repair (PubMed:24798879). Plays a key role in the regulation of embryonic neurogenesis (By similarity). Promotes the proliferation of neural progenitors and inhibits neuronal differentiation during cortical development (By similarity). Regulates neurogenesis via the modulation of RASSF10; regulates RASSF10 expression by promoting SETD1A-mediated H3K4 methylation at the RASSF10 promoter (By similarity).

Cellular Location

Nucleus. Melanosome. Cytoplasm. Note=Identified by mass spectrometry in melanosome fractions from stage I to stage IV

Tissue Location

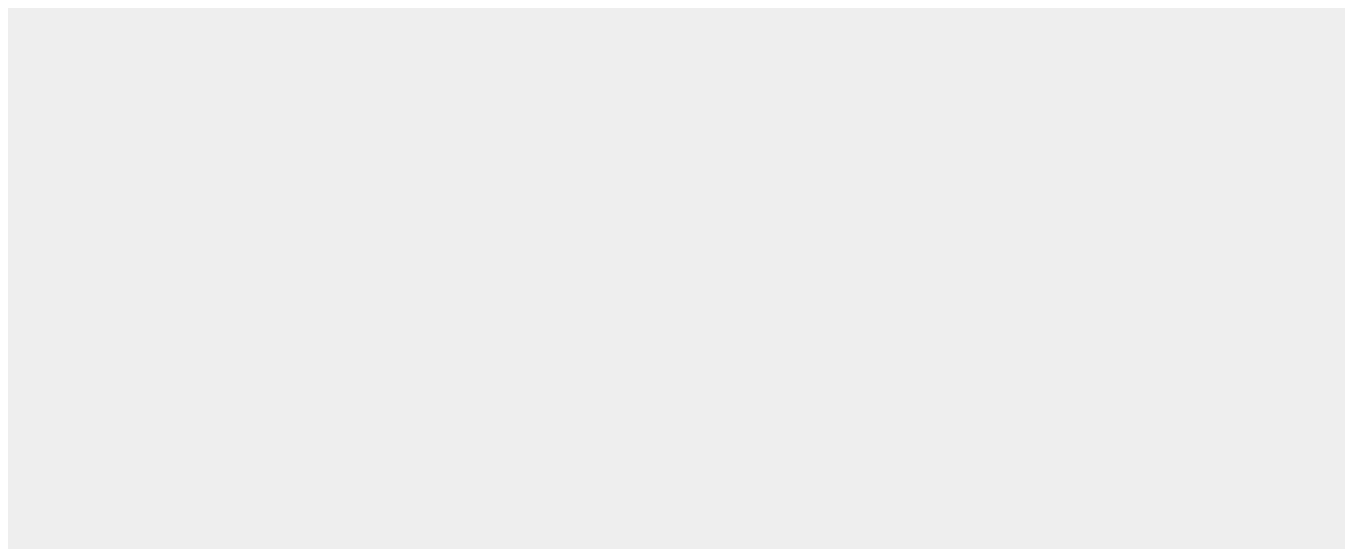
Ubiquitously expressed.

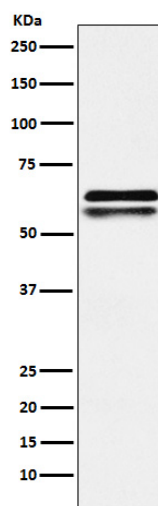
Anti-NAP1L1 Rabbit Monoclonal Antibody - Protocols

Provided below are standard protocols that you may find useful for product applications.

- [Western Blot](#)
- [Blocking Peptides](#)
- [Dot Blot](#)
- [Immunohistochemistry](#)
- [Immunofluorescence](#)
- [Immunoprecipitation](#)
- [Flow Cytometry](#)
- [Cell Culture](#)

Anti-NAP1L1 Rabbit Monoclonal Antibody - Images





Western blot analysis of NAP1L1 expression in Jurkat cell lysate.