

**Anti-ROR2 Rabbit Monoclonal Antibody**  
**Catalog # ABO15755****Specification**

---

**Anti-ROR2 Rabbit Monoclonal Antibody - Product Information**

Application	WB, IF, ICC, FC
Primary Accession	<a href="#">Q01974</a>
Host	Rabbit
Isotype	IgG
Reactivity	Human
Clonality	Monoclonal
Format	Liquid

**Description**

Anti-ROR2 Rabbit Monoclonal Antibody . Tested in WB, ICC/IF, Flow Cytometry applications. This antibody reacts with Human.

**Anti-ROR2 Rabbit Monoclonal Antibody - Additional Information**

**Gene ID** 4920

**Other Names**

Tyrosine-protein kinase transmembrane receptor ROR2, 2.7.10.1, Neurotrophic tyrosine kinase, receptor-related 2, ROR2, NTRKR2

**Calculated MW**

105 kDa KDa

**Application Details**

WB 1:500-1:2000<br>ICC/IF 1:50-1:200<br>FC 1:50

**Contents**

Rabbit IgG in phosphate buffered saline, pH 7.4, 150mM NaCl, 0.02% sodium azide and 50% glycerol, 0.4-0.5mg/ml BSA.

**Immunogen**

A synthesized peptide derived from human ROR2

**Purification**

Affinity-chromatography

**Storage**

**Store at -20°C for one year. For short term storage and frequent use, store at 4°C for up to one month. Avoid repeated freeze-thaw cycles.**

**Anti-ROR2 Rabbit Monoclonal Antibody - Protein Information**

**Name** ROR2

**Synonyms** NTRKR2**Function**

Tyrosine-protein kinase receptor which may be involved in the early formation of the chondrocytes. It seems to be required for cartilage and growth plate development (By similarity). Phosphorylates YWHAB, leading to induction of osteogenesis and bone formation (PubMed:<a href="http://www.uniprot.org/citations/17717073" target="\_blank">17717073</a>). In contrast, has also been shown to have very little tyrosine kinase activity in vitro. May act as a receptor for wnt ligand WNT5A which may result in the inhibition of WNT3A-mediated signaling (PubMed:<a href="http://www.uniprot.org/citations/25029443" target="\_blank">25029443</a>).

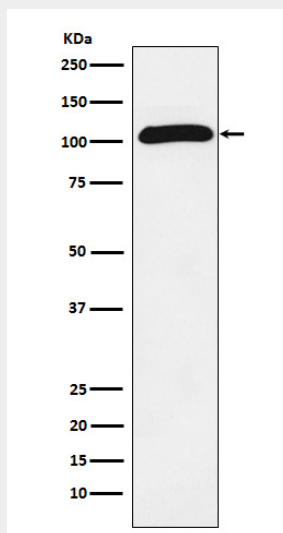
**Cellular Location**

Cell membrane; Single-pass type I membrane protein

**Anti-ROR2 Rabbit Monoclonal Antibody - Protocols**

Provided below are standard protocols that you may find useful for product applications.

- [Western Blot](#)
- [Blocking Peptides](#)
- [Dot Blot](#)
- [Immunohistochemistry](#)
- [Immunofluorescence](#)
- [Immunoprecipitation](#)
- [Flow Cytometry](#)
- [Cell Culture](#)

**Anti-ROR2 Rabbit Monoclonal Antibody - Images**

Western blot analysis of ROR2 expression in Saos-2 cell lysate.