

**Anti-PRKRA Rabbit Monoclonal Antibody**  
**Catalog # ABO15756****Specification**

---

**Anti-PRKRA Rabbit Monoclonal Antibody - Product Information**

Application	WB, IHC
Primary Accession	<a href="#">O75569</a>
Host	Rabbit
Isotype	IgG
Reactivity	Rat, Human, Mouse
Clonality	Monoclonal
Format	Liquid

**Description**

Anti-PRKRA Rabbit Monoclonal Antibody . Tested in WB, IHC applications. This antibody reacts with Human, Mouse, Rat.

**Anti-PRKRA Rabbit Monoclonal Antibody - Additional Information**

**Gene ID** 8575

**Other Names**

Interferon-inducible double-stranded RNA-dependent protein kinase activator A, PKR-associated protein X, PKR-associating protein X, Protein activator of the interferon-induced protein kinase, Protein kinase, interferon-inducible double-stranded RNA-dependent activator, PRKRA, PACT, RAX

**Calculated MW**

32 kDa KDa

**Application Details**

WB 1:500-1:2000<br>IHC 1:50-1:200

**Contents**

Rabbit IgG in phosphate buffered saline, pH 7.4, 150mM NaCl, 0.02% sodium azide and 50% glycerol, 0.4-0.5mg/ml BSA.

**Immunogen**

A synthesized peptide derived from human PRKRA

**Purification**

Affinity-chromatography

**Storage**

**Store at -20°C for one year. For short term storage and frequent use, store at 4°C for up to one month. Avoid repeated freeze-thaw cycles.**

**Anti-PRKRA Rabbit Monoclonal Antibody - Protein Information**

**Name** PRKRA

**Synonyms** PACT, RAX

**Function**

Activates EIF2AK2/PKR in the absence of double-stranded RNA (dsRNA), leading to phosphorylation of EIF2S1/EIF2-alpha and inhibition of translation and induction of apoptosis. Required for siRNA production by DICER1 and for subsequent siRNA-mediated post-transcriptional gene silencing. Does not seem to be required for processing of pre-miRNA to miRNA by DICER1. Promotes UBC9-p53/TP53 association and sumoylation and phosphorylation of p53/TP53 at 'Lys-386' at 'Ser-392' respectively and enhances its activity in a EIF2AK2/PKR-dependent manner (By similarity).

**Cellular Location**

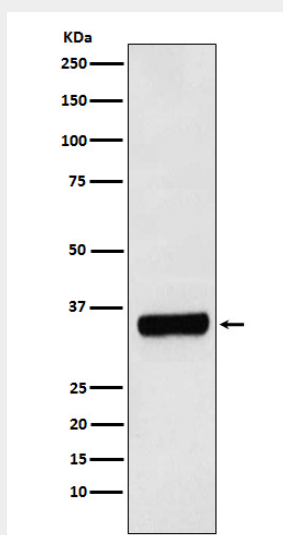
Cytoplasm, perinuclear region. Cytoplasm.

**Anti-PRKRA Rabbit Monoclonal Antibody - Protocols**

Provided below are standard protocols that you may find useful for product applications.

- [Western Blot](#)
- [Blocking Peptides](#)
- [Dot Blot](#)
- [Immunohistochemistry](#)
- [Immunofluorescence](#)
- [Immunoprecipitation](#)
- [Flow Cytometry](#)
- [Cell Culture](#)

**Anti-PRKRA Rabbit Monoclonal Antibody - Images**



Western blot analysis of PRKRA expression in HepG2 cell lysate.