

**Anti-BHMT Rabbit Monoclonal Antibody**  
**Catalog # ABO15773****Specification**

---

**Anti-BHMT Rabbit Monoclonal Antibody - Product Information**

Application	WB, IHC, IP
Primary Accession	<a href="#">Q93088</a>
Host	Rabbit
Isotype	IgG
Reactivity	Human
Clonality	Monoclonal
Format	Liquid

**Description**

Anti-BHMT Rabbit Monoclonal Antibody . Tested in WB, IHC, IP applications. This antibody reacts with Human.

**Anti-BHMT Rabbit Monoclonal Antibody - Additional Information**

**Gene ID** 635

**Other Names**

Betaine--homocysteine S-methyltransferase 1, 2.1.1.5, BHMT {ECO:0000303|PubMed:8798461}

**Calculated MW**

45 kDa KDa

**Application Details**

WB 1:500-1:2000<br>IHC 1:50-1:200<br>IP 1:50

**Contents**

Rabbit IgG in phosphate buffered saline, pH 7.4, 150mM NaCl, 0.02% sodium azide and 50% glycerol, 0.4-0.5mg/ml BSA.

**Immunogen**

A synthesized peptide derived from human BHMT

**Purification**

Affinity-chromatography

Storage

**Store at -20°C for one year. For short term storage and frequent use, store at 4°C for up to one month. Avoid repeated freeze-thaw cycles.**

**Anti-BHMT Rabbit Monoclonal Antibody - Protein Information**

**Name** BHMT {ECO:0000303|PubMed:8798461}

**Function**

Involved in the regulation of homocysteine metabolism. Converts betaine and homocysteine to dimethylglycine and methionine, respectively. This reaction is also required for the irreversible oxidation of choline.

**Cellular Location**

Cytoplasm, cytosol {ECO:0000250|UniProtKB:O09171}. Nucleus {ECO:0000250|UniProtKB:O09171} Note=Predominantly localized in the cytoplasm with a small fraction detected in the nucleus. Translocates into the nucleus upon oxidative stress. {ECO:0000250|UniProtKB:O09171}

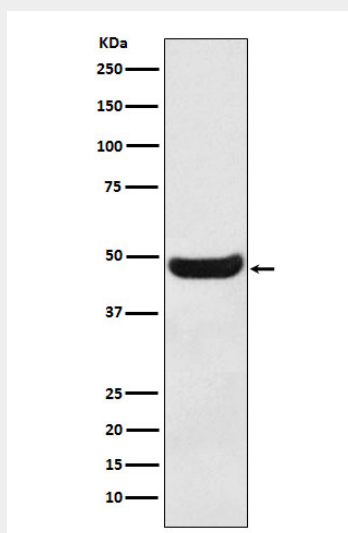
**Tissue Location**

Found exclusively in liver and kidney.

**Anti-BHMT Rabbit Monoclonal Antibody - Protocols**

Provided below are standard protocols that you may find useful for product applications.

- [Western Blot](#)
- [Blocking Peptides](#)
- [Dot Blot](#)
- [Immunohistochemistry](#)
- [Immunofluorescence](#)
- [Immunoprecipitation](#)
- [Flow Cytometry](#)
- [Cell Culture](#)

**Anti-BHMT Rabbit Monoclonal Antibody - Images**

Western blot analysis of BHMT expression in Human fetal kidney lysate.