

Anti-TRIM29 Rabbit Monoclonal Antibody
Catalog # ABO15774**Specification**

Anti-TRIM29 Rabbit Monoclonal Antibody - Product Information

Application	WB
Primary Accession	Q14134
Host	Rabbit
Isotype	IgG
Reactivity	Rat, Human, Mouse
Clonality	Monoclonal
Format	Liquid

Description

Anti-TRIM29 Rabbit Monoclonal Antibody . Tested in WB application. This antibody reacts with Human, Mouse, Rat.

Anti-TRIM29 Rabbit Monoclonal Antibody - Additional Information

Gene ID 23650

Other Names

Tripartite motif-containing protein 29, Ataxia telangiectasia group D-associated protein, TRIM29, ATDC

Calculated MW

68 kDa KDa

Application Details

WB 1:500-1:2000

Contents

Rabbit IgG in phosphate buffered saline, pH 7.4, 150mM NaCl, 0.02% sodium azide and 50% glycerol, 0.4-0.5mg/ml BSA.

Immunogen

A synthesized peptide derived from human TRIM29

Purification

Affinity-chromatography

Storage

Store at -20°C for one year. For short term storage and frequent use, store at 4°C for up to one month. Avoid repeated freeze-thaw cycles.

Anti-TRIM29 Rabbit Monoclonal Antibody - Protein Information

Name TRIM29

Synonyms ATDC

Function

Plays a crucial role in the regulation of macrophage activation in response to viral or bacterial infections within the respiratory tract. Mechanistically, TRIM29 interacts with IKBKG/NEMO in the lysosome where it induces its 'Lys-48' ubiquitination and subsequent degradation. In turn, the expression of type I interferons and the production of pro-inflammatory cytokines are inhibited. Additionally, induces the 'Lys-48' ubiquitination of STING1 in a similar way, leading to its degradation.

Cellular Location

Cytoplasm. Lysosome. Note=Colocalizes with intermediate filaments

Tissue Location

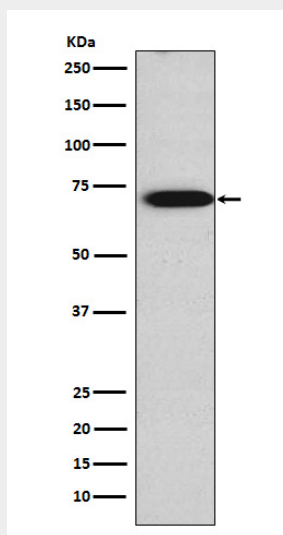
Expressed in placenta, prostate and thymus.

Anti-TRIM29 Rabbit Monoclonal Antibody - Protocols

Provided below are standard protocols that you may find useful for product applications.

- [Western Blot](#)
- [Blocking Peptides](#)
- [Dot Blot](#)
- [Immunohistochemistry](#)
- [Immunofluorescence](#)
- [Immunoprecipitation](#)
- [Flow Cytometry](#)
- [Cell Culture](#)

Anti-TRIM29 Rabbit Monoclonal Antibody - Images



Western blot analysis of TRIM29 expression in JAR cell lysate.