

Anti-KLRG1 Rabbit Monoclonal Antibody
Catalog # ABO15787**Specification**

Anti-KLRG1 Rabbit Monoclonal Antibody - Product Information

Application	WB
Primary Accession	Q96E93
Host	Rabbit
Isotype	IgG
Reactivity	Rat, Human, Mouse
Clonality	Monoclonal
Format	Liquid

Description

Anti-KLRG1 Rabbit Monoclonal Antibody . Tested in WB application. This antibody reacts with Human, Mouse, Rat.

Anti-KLRG1 Rabbit Monoclonal Antibody - Additional Information

Gene ID 10219

Other Names

Killer cell lectin-like receptor subfamily G member 1, C-type lectin domain family 15 member A, ITIM-containing receptor MAFA-L, MAFA-like receptor, Mast cell function-associated antigen, KLRG1, CLEC15A, MAFA, MAFAL

Calculated MW

38 kDa KDa

Application Details

WB 1:500-1:2000

Contents

Rabbit IgG in phosphate buffered saline, pH 7.4, 150mM NaCl, 0.02% sodium azide and 50% glycerol, 0.4-0.5mg/ml BSA.

Immunogen

A synthesized peptide derived from human KLRG1

Purification

Affinity-chromatography

Storage

Store at -20°C for one year. For short term storage and frequent use, store at 4°C for up to one month. Avoid repeated freeze-thaw cycles.

Anti-KLRG1 Rabbit Monoclonal Antibody - Protein Information

Name KLRG1

Synonyms CLEC15A, MAFA, MAFAL

Function

Plays an inhibitory role on natural killer (NK) cells and T- cell functions upon binding to their non-MHC ligands. May mediate missing self recognition by binding to a highly conserved site on classical cadherins, enabling it to monitor expression of E- cadherin/CDH1, N-cadherin/CDH2 and R-cadherin/CDH4 on target cells.

Cellular Location

Cell membrane; Single-pass type II membrane protein

Tissue Location

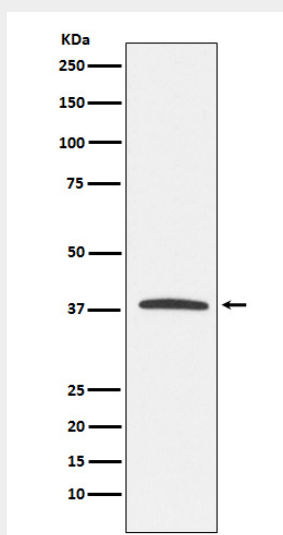
Expressed specifically on natural killer (NK) cells and T-cells, mainly CD8 T-cells.

Anti-KLRG1 Rabbit Monoclonal Antibody - Protocols

Provided below are standard protocols that you may find useful for product applications.

- [Western Blot](#)
- [Blocking Peptides](#)
- [Dot Blot](#)
- [Immunohistochemistry](#)
- [Immunofluorescence](#)
- [Immunoprecipitation](#)
- [Flow Cytometry](#)
- [Cell Culture](#)

Anti-KLRG1 Rabbit Monoclonal Antibody - Images



Western blot analysis of KLRG1 expression in Jurkat cell lysate.