

Anti-THRA Rabbit Monoclonal Antibody Catalog # ABO15790

Specification

Anti-THRA Rabbit Monoclonal Antibody - Product Information

Application	WB
Primary Accession	P10827
Host	Rabbit
Isotype	IgG
Reactivity	Human
Clonality	Monoclonal
Format	Liquid

Description

Anti-THRA Rabbit Monoclonal Antibody . Tested in WB application. This antibody reacts with Human.

Anti-THRA Rabbit Monoclonal Antibody - Additional Information

Gene ID 7067

Other Names

Thyroid hormone receptor alpha, Nuclear receptor subfamily 1 group A member 1, V-erbA-related protein 7, EAR-7, c-erbA-1, c-erbA-alpha, THRA, EAR7, ERBA1, NR1A1, THRA1, THRA2

Calculated MW

55 kDa KDa

Application Details

WB 1:500-1:2000

Contents

Rabbit IgG in phosphate buffered saline, pH 7.4, 150mM NaCl, 0.02% sodium azide and 50% glycerol, 0.4-0.5mg/ml BSA.

Immunogen

A synthesized peptide derived from human THRA

Purification

Affinity-chromatography

Storage

Store at -20°C for one year. For short term storage and frequent use, store at 4°C for up to one month. Avoid repeated freeze-thaw cycles.

Anti-THRA Rabbit Monoclonal Antibody - Protein Information

Name THRA

Synonyms EAR7, ERBA1, NR1A1, THRA1, THRA2

Function

[Isoform Alpha-1]: Nuclear hormone receptor that can act as a repressor or activator of transcription. High affinity receptor for thyroid hormones, including triiodothyronine and thyroxine.

Cellular Location

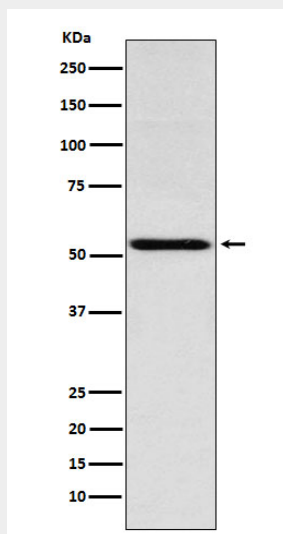
Nucleus.

Anti-THRA Rabbit Monoclonal Antibody - Protocols

Provided below are standard protocols that you may find useful for product applications.

- [Western Blot](#)
- [Blocking Peptides](#)
- [Dot Blot](#)
- [Immunohistochemistry](#)
- [Immunofluorescence](#)
- [Immunoprecipitation](#)
- [Flow Cytometry](#)
- [Cell Culture](#)

Anti-THRA Rabbit Monoclonal Antibody - Images



Western blot analysis of THRA expression in Jurkat cell lysate.