

Anti-ApoD Rabbit Monoclonal Antibody
Catalog # ABO15797**Specification**

Anti-ApoD Rabbit Monoclonal Antibody - Product Information

Application	WB, IHC
Primary Accession	P05090
Host	Rabbit
Isotype	IgG
Reactivity	Human
Clonality	Monoclonal
Format	Liquid

Description

Anti-ApoD Rabbit Monoclonal Antibody . Tested in WB, IHC applications. This antibody reacts with Human.

Anti-ApoD Rabbit Monoclonal Antibody - Additional Information

Gene ID 347

Other Names

Apolipoprotein D, Apo-D, ApoD, APOD

Calculated MW

30 kDa KDa

Application Details

WB 1:500-1:2000
IHC 1:50-1:200

Contents

Rabbit IgG in phosphate buffered saline, pH 7.4, 150mM NaCl, 0.02% sodium azide and 50% glycerol, 0.4-0.5mg/ml BSA.

Immunogen

A synthesized peptide derived from human ApoD

Purification

Affinity-chromatography

Storage

Store at -20°C for one year. For short term storage and frequent use, store at 4°C for up to one month. Avoid repeated freeze-thaw cycles.

Anti-ApoD Rabbit Monoclonal Antibody - Protein Information

Name APOD

Function

APOD occurs in the macromolecular complex with lecithin- cholesterol acyltransferase. It is probably involved in the transport and binding of bilin. Appears to be able to transport a variety of ligands in a number of different contexts.

Cellular Location

Secreted.

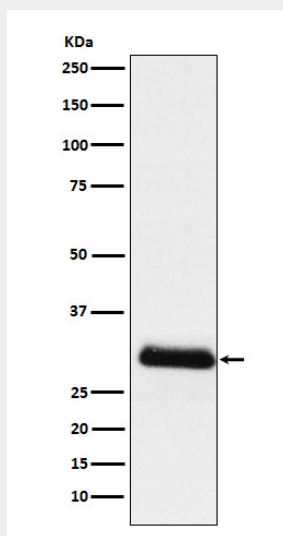
Tissue Location

Expressed in liver, intestine, pancreas, kidney, placenta, adrenal, spleen, fetal brain tissue and tears

Anti-ApoD Rabbit Monoclonal Antibody - Protocols

Provided below are standard protocols that you may find useful for product applications.

- [Western Blot](#)
- [Blocking Peptides](#)
- [Dot Blot](#)
- [Immunohistochemistry](#)
- [Immunofluorescence](#)
- [Immunoprecipitation](#)
- [Flow Cytometry](#)
- [Cell Culture](#)

Anti-ApoD Rabbit Monoclonal Antibody - Images

Western blot analysis of ApoD expression in Human plasma lysate.