

**Anti-RAD23A Rabbit Monoclonal Antibody**  
**Catalog # ABO15804****Specification**

---

**Anti-RAD23A Rabbit Monoclonal Antibody - Product Information**

Application	WB, FC
Primary Accession	<a href="#">P54725</a>
Host	Rabbit
Isotype	IgG
Reactivity	Rat, Human, Mouse
Clonality	Monoclonal
Format	Liquid

**Description**

Anti-RAD23A Rabbit Monoclonal Antibody . Tested in WB, Flow Cytometry applications. This antibody reacts with Human, Mouse, Rat.

**Anti-RAD23A Rabbit Monoclonal Antibody - Additional Information**

**Gene ID** 5886

**Other Names**

UV excision repair protein RAD23 homolog A, HR23A, hHR23A, RAD23A

**Calculated MW**

60 kDa KDa

**Application Details**

WB 1:1000-1:5000<br>FC 1:50

**Contents**

Rabbit IgG in phosphate buffered saline, pH 7.4, 150mM NaCl, 0.02% sodium azide and 50% glycerol, 0.4-0.5mg/ml BSA.

**Immunogen**

A synthesized peptide derived from human RAD23A

**Purification**

Affinity-chromatography

**Storage**

**Store at -20°C for one year. For short term storage and frequent use, store at 4°C for up to one month. Avoid repeated freeze-thaw cycles.**

**Anti-RAD23A Rabbit Monoclonal Antibody - Protein Information**

**Name** RAD23A

**Function**

Multiubiquitin chain receptor involved in modulation of proteasomal degradation. Binds to 'Lys-48'-linked polyubiquitin chains in a length-dependent manner and with a lower affinity to 'Lys-63'-linked polyubiquitin chains. Proposed to be capable to bind simultaneously to the 26S proteasome and to polyubiquitinated substrates and to deliver ubiquitinated proteins to the proteasome. (Microbial infection) Involved in Vpr-dependent replication of HIV-1 in non-proliferating cells and primary macrophages. Required for the association of HIV-1 Vpr with the host proteasome.

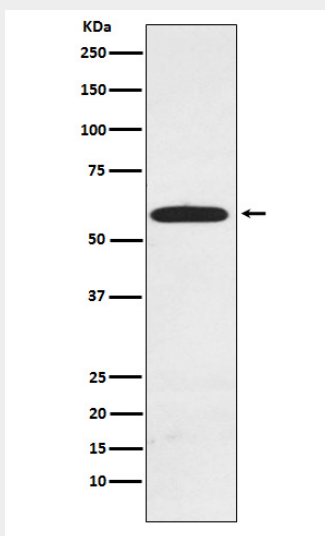
**Cellular Location**

Nucleus.

**Anti-RAD23A Rabbit Monoclonal Antibody - Protocols**

Provided below are standard protocols that you may find useful for product applications.

- [Western Blot](#)
- [Blocking Peptides](#)
- [Dot Blot](#)
- [Immunohistochemistry](#)
- [Immunofluorescence](#)
- [Immunoprecipitation](#)
- [Flow Cytometry](#)
- [Cell Culture](#)

**Anti-RAD23A Rabbit Monoclonal Antibody - Images**

Western blot analysis of RAD23A expression in MCF7 cell lysate.