

Anti-TrpRS Rabbit Monoclonal Antibody
Catalog # ABO15806**Specification****Anti-TrpRS Rabbit Monoclonal Antibody - Product Information**

Application	WB, IHC, FC
Primary Accession	P23381
Host	Rabbit
Isotype	IgG
Reactivity	Rat, Human, Mouse
Clonality	Monoclonal
Format	Liquid

Description

Anti-TrpRS Rabbit Monoclonal Antibody . Tested in WB, IHC, Flow Cytometry applications. This antibody reacts with Human, Mouse, Rat.

Anti-TrpRS Rabbit Monoclonal Antibody - Additional Information

Gene ID 7453

Other Names

Tryptophan--tRNA ligase, cytoplasmic, 6.1.1.2, Interferon-induced protein 53, IFP53, Tryptophanyl-tRNA synthetase, TrpRS, hWRS, T1-TrpRS, T2-TrpRS, WARS1 (http://www.genenames.org/cgi-bin/gene_symbol_report?hgnc_id=12729)>HGNC:12729), IFI53, WARS, WRS

Calculated MW

53 kDa KDa

Application Details

WB 1:500-1:2000
IHC 1:100-1:500
FC 1:50

Contents

Rabbit IgG in phosphate buffered saline, pH 7.4, 150mM NaCl, 0.02% sodium azide and 50% glycerol, 0.4-0.5mg/ml BSA.

Immunogen

A synthesized peptide derived from human TrpRS

Purification

Affinity-chromatography

Storage

Store at -20°C for one year. For short term storage and frequent use, store at 4°C for up to one month. Avoid repeated freeze-thaw cycles.

Anti-TrpRS Rabbit Monoclonal Antibody - Protein Information

Name WARS1 ([HGNC:12729](#))

Synonyms IFI53, WARS, WRS

Function

Catalyzes the attachment of tryptophan to tRNA(Trp) in a two- step reaction: tryptophan is first activated by ATP to form Trp-AMP and then transferred to the acceptor end of the tRNA(Trp).

Cellular Location

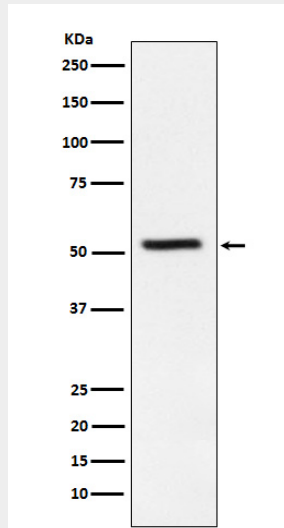
Cytoplasm.

Anti-TrpRS Rabbit Monoclonal Antibody - Protocols

Provided below are standard protocols that you may find useful for product applications.

- [Western Blot](#)
- [Blocking Peptides](#)
- [Dot Blot](#)
- [Immunohistochemistry](#)
- [Immunofluorescence](#)
- [Immunoprecipitation](#)
- [Flow Cytometry](#)
- [Cell Culture](#)

Anti-TrpRS Rabbit Monoclonal Antibody - Images



Western blot analysis of TrpRS expression in HeLa cell lysate.