

Anti-VEGFB Rabbit Monoclonal Antibody
Catalog # ABO15822**Specification**

Anti-VEGFB Rabbit Monoclonal Antibody - Product Information

Application	WB
Primary Accession	P49765
Host	Rabbit
Isotype	IgG
Reactivity	Human, Mouse
Clonality	Monoclonal
Format	Liquid

Description

Anti-VEGFB Rabbit Monoclonal Antibody . Tested in WB application. This antibody reacts with Human, Mouse.

Anti-VEGFB Rabbit Monoclonal Antibody - Additional Information

Gene ID 7423

Other Names

Vascular endothelial growth factor B, VEGF-B, VEGF-related factor, VRF, VEGFB, VRF

Calculated MW

16-62 kDa KDa

Application Details

WB 1:500-1:2000

Contents

Rabbit IgG in phosphate buffered saline, pH 7.4, 150mM NaCl, 0.02% sodium azide and 50% glycerol, 0.4-0.5mg/ml BSA.

Immunogen

A synthesized peptide derived from human VEGFB

Purification

Affinity-chromatography

Storage

Store at -20°C for one year. For short term storage and frequent use, store at 4°C for up to one month. Avoid repeated freeze-thaw cycles.

Anti-VEGFB Rabbit Monoclonal Antibody - Protein Information

Name VEGFB

Synonyms VRF**Function**

Growth factor for endothelial cells. VEGF-B167 binds heparin and neuropilin-1 whereas the binding to neuropilin-1 of VEGF-B186 is regulated by proteolysis.

Cellular Location

Secreted. Note=Secreted but remains associated to cells or to the extracellular matrix unless released by heparin

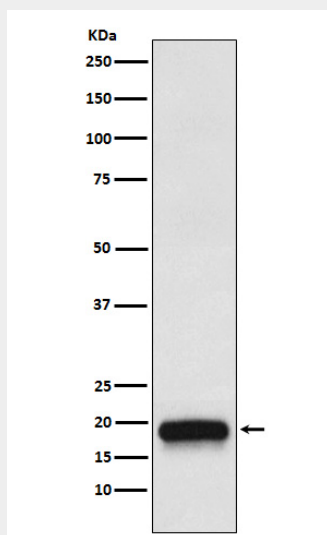
Tissue Location

Expressed in all tissues except liver. Highest levels found in heart, skeletal muscle and pancreas

Anti-VEGFB Rabbit Monoclonal Antibody - Protocols

Provided below are standard protocols that you may find useful for product applications.

- [Western Blot](#)
- [Blocking Peptides](#)
- [Dot Blot](#)
- [Immunohistochemistry](#)
- [Immunofluorescence](#)
- [Immunoprecipitation](#)
- [Flow Cytometry](#)
- [Cell Culture](#)

Anti-VEGFB Rabbit Monoclonal Antibody - Images

Western blot analysis of VEGFB expression in 293T cell transfected with VEGFB recombinant protein.