

Anti-NR2E1 Rabbit Monoclonal Antibody
Catalog # ABO15833**Specification**

Anti-NR2E1 Rabbit Monoclonal Antibody - Product Information

Application	WB
Primary Accession	Q9Y466
Host	Rabbit
Isotype	IgG
Reactivity	Rat, Human, Mouse
Clonality	Monoclonal
Format	Liquid

Description

Anti-NR2E1 Rabbit Monoclonal Antibody . Tested in WB application. This antibody reacts with Human, Mouse, Rat.

Anti-NR2E1 Rabbit Monoclonal Antibody - Additional Information

Gene ID 7101

Other Names

Nuclear receptor subfamily 2 group E member 1, Nuclear receptor TLX, Protein tailless homolog, TII, hTII, NR2E1, TLX

Calculated MW

48 kDa KDa

Application Details

WB 1:500-1:2000

Contents

Rabbit IgG in phosphate buffered saline, pH 7.4, 150mM NaCl, 0.02% sodium azide and 50% glycerol, 0.4-0.5mg/ml BSA.

Immunogen

A synthesized peptide derived from human NR2E1

Purification

Affinity-chromatography

Storage

Store at -20°C for one year. For short term storage and frequent use, store at 4°C for up to one month. Avoid repeated freeze-thaw cycles.

Anti-NR2E1 Rabbit Monoclonal Antibody - Protein Information

Name NR2E1

Synonyms TLX

Function

Orphan receptor that binds DNA as a monomer to hormone response elements (HRE) containing an extended core motif half-site sequence 5'-AAGGTCA-3' in which the 5' flanking nucleotides participate in determining receptor specificity (By similarity). May be required to pattern anterior brain differentiation. Involved in the regulation of retinal development and essential for vision. During retinogenesis, regulates PTEN-Cyclin D expression via binding to the promoter region of PTEN and suppressing its activity (By similarity). May be involved in retinoic acid receptor (RAR) regulation in retinal cells.

Cellular Location

Nucleus {ECO:0000255|PROSITE-ProRule:PRU00407}.

Tissue Location

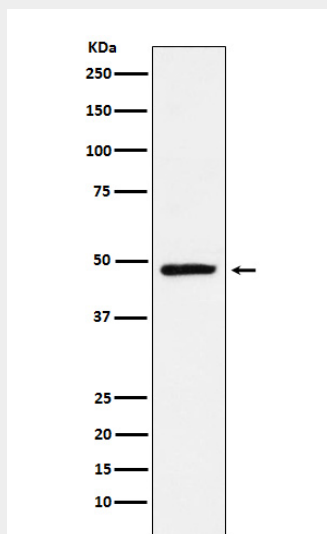
Brain specific. Present in all brain sections tested, highest levels in the caudate nucleus and hippocampus, weakest levels in the thalamus.

Anti-NR2E1 Rabbit Monoclonal Antibody - Protocols

Provided below are standard protocols that you may find useful for product applications.

- [Western Blot](#)
- [Blocking Peptides](#)
- [Dot Blot](#)
- [Immunohistochemistry](#)
- [Immunofluorescence](#)
- [Immunoprecipitation](#)
- [Flow Cytometry](#)
- [Cell Culture](#)

Anti-NR2E1 Rabbit Monoclonal Antibody - Images



Western blot analysis of NR2E1 / Tailless expression in SH-SY5Y cell lysate.