

**Anti-Tbx3 Rabbit Monoclonal Antibody**  
**Catalog # ABO15840****Specification**

---

**Anti-Tbx3 Rabbit Monoclonal Antibody - Product Information**

Application	WB, IP, FC
Primary Accession	<a href="#">O15119</a>
Host	Rabbit
Isotype	IgG
Reactivity	Rat, Human, Mouse
Clonality	Monoclonal
Format	Liquid

**Description**

Anti-Tbx3 Rabbit Monoclonal Antibody . Tested in WB, IP, Flow Cytometry applications. This antibody reacts with Human, Mouse, Rat.

**Anti-Tbx3 Rabbit Monoclonal Antibody - Additional Information**

**Gene ID** 6926

**Other Names**

T-box transcription factor TBX3, T-box protein 3, TBX3

**Calculated MW**

85 kDa KDa

**Application Details**

WB 1:500-1:2000<br>IP 1:50<br>FC 1:100

**Contents**

Rabbit IgG in phosphate buffered saline, pH 7.4, 150mM NaCl, 0.02% sodium azide and 50% glycerol, 0.4-0.5mg/ml BSA.

**Immunogen**

A synthesized peptide derived from human Tbx3

**Purification**

Affinity-chromatography

**Storage**

**Store at -20°C for one year. For short term storage and frequent use, store at 4°C for up to one month. Avoid repeated freeze-thaw cycles.**

**Anti-Tbx3 Rabbit Monoclonal Antibody - Protein Information**

**Name** TBX3

**Function**

Transcriptional repressor involved in developmental processes (PubMed:<a href="http://www.uniprot.org/citations/10468588" target="\_blank">10468588</a>). Binds to the palindromic T site 5'- TTCACACCTAGGTGTGAA-3' DNA sequence, or a half-site, which are present in the regulatory region of several genes (PubMed:<a href="http://www.uniprot.org/citations/12000749" target="\_blank">12000749</a>). Probably plays a role in limb pattern formation (PubMed:<a href="http://www.uniprot.org/citations/10468588" target="\_blank">10468588</a>). Required for mammary placode induction, and maintenance of the mammary buds during development (By similarity). Involved in branching morphogenesis in both developing lungs and adult mammary glands, via negative modulation of target genes; acting redundantly with TBX2 (By similarity). Required, together with TBX2, to maintain cell proliferation in the embryonic lung mesenchyme; perhaps acting downstream of SHH, BMP and TGFbeta signaling (By similarity). Involved in modulating early inner ear development, acting independently of, and also redundantly with, TBX2 in different subregions of the developing ear (By similarity). Acts as a negative regulator of PML function in cellular senescence (PubMed:<a href="http://www.uniprot.org/citations/22002537" target="\_blank">22002537</a>).

**Cellular Location**

Nucleus {ECO:0000255|PROSITE-ProRule:PRU00201}.

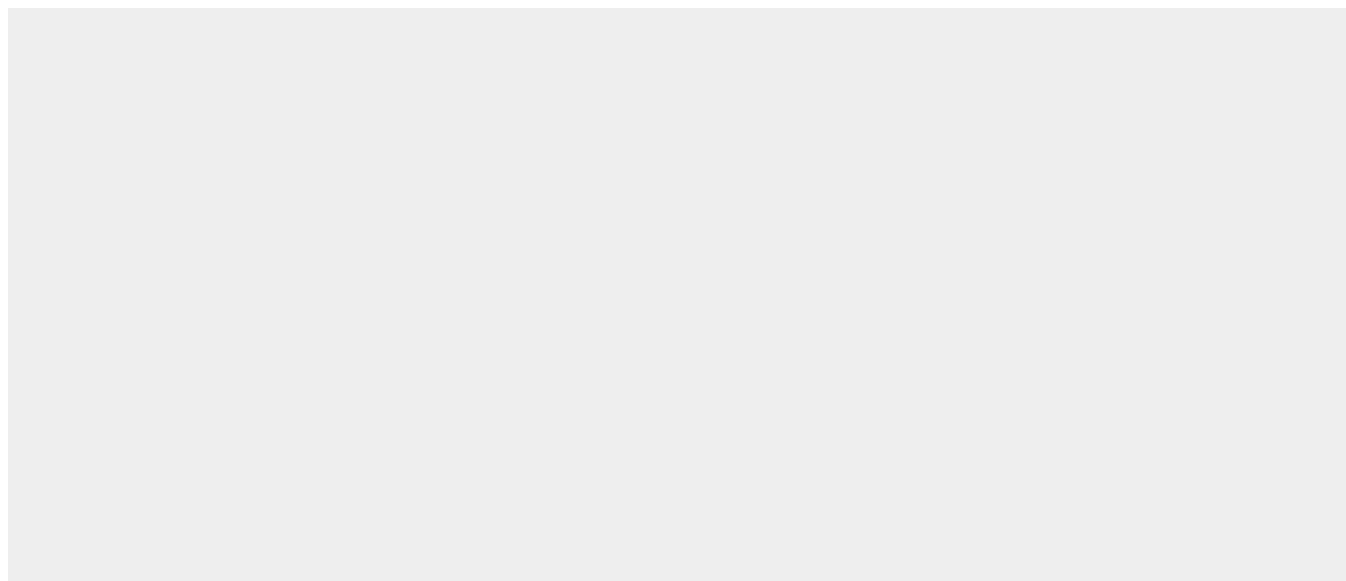
**Tissue Location**

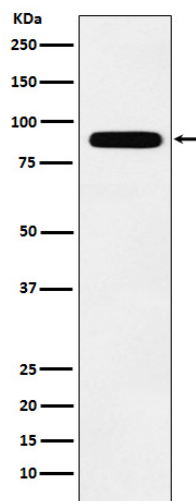
Widely expressed.

**Anti-Tbx3 Rabbit Monoclonal Antibody - Protocols**

Provided below are standard protocols that you may find useful for product applications.

- [Western Blot](#)
- [Blocking Peptides](#)
- [Dot Blot](#)
- [Immunohistochemistry](#)
- [Immunofluorescence](#)
- [Immunoprecipitation](#)
- [Flow Cytometry](#)
- [Cell Culture](#)

**Anti-Tbx3 Rabbit Monoclonal Antibody - Images**



Western blot analysis of Tbx3 expression in MCF7 cell lysate.