

Anti-WIF1 Rabbit Monoclonal Antibody
Catalog # ABO15842**Specification**

Anti-WIF1 Rabbit Monoclonal Antibody - Product Information

Application	WB, IP
Primary Accession	Q9Y5W5
Host	Rabbit
Isotype	IgG
Reactivity	Rat, Human, Mouse
Clonality	Monoclonal
Format	Liquid

Description

Anti-WIF1 Rabbit Monoclonal Antibody . Tested in WB, IP applications. This antibody reacts with Human, Mouse, Rat.

Anti-WIF1 Rabbit Monoclonal Antibody - Additional Information

Gene ID 11197

Other Names

Wnt inhibitory factor 1, WIF-1, WIF1

Calculated MW

41 kDa KDa

Application Details

WB 1:500-1:2000
IP 1:50

Contents

Rabbit IgG in phosphate buffered saline, pH 7.4, 150mM NaCl, 0.02% sodium azide and 50% glycerol, 0.4-0.5mg/ml BSA.

Immunogen

A synthesized peptide derived from human WIF1

Purification

Affinity-chromatography

Storage

Store at -20°C for one year. For short term storage and frequent use, store at 4°C for up to one month. Avoid repeated freeze-thaw cycles.

Anti-WIF1 Rabbit Monoclonal Antibody - Protein Information

Name WIF1

Function

Binds to WNT proteins and inhibits their activities. May be involved in mesoderm segmentation.

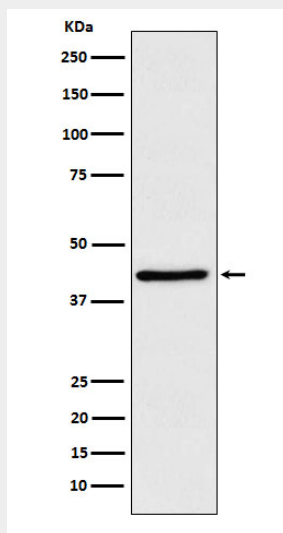
Cellular Location

Secreted.

Anti-WIF1 Rabbit Monoclonal Antibody - Protocols

Provided below are standard protocols that you may find useful for product applications.

- [Western Blot](#)
- [Blocking Peptides](#)
- [Dot Blot](#)
- [Immunohistochemistry](#)
- [Immunofluorescence](#)
- [Immunoprecipitation](#)
- [Flow Cytometry](#)
- [Cell Culture](#)

Anti-WIF1 Rabbit Monoclonal Antibody - Images

Western blot analysis of WIF1 expression in HeLa cell lysate.