

**Anti-Gemin 3 Rabbit Monoclonal Antibody**  
**Catalog # ABO15848****Specification****Anti-Gemin 3 Rabbit Monoclonal Antibody - Product Information**

Application	WB, IHC, IF, ICC, FC
Primary Accession	<a href="#">Q9UHI6</a>
Host	Rabbit
Isotype	IgG
Reactivity	Human, Mouse
Clonality	Monoclonal
Format	Liquid

**Description**

Anti-Gemin 3 Rabbit Monoclonal Antibody . Tested in WB, IHC, ICC/IF, Flow Cytometry applications. This antibody reacts with Human, Mouse.

**Anti-Gemin 3 Rabbit Monoclonal Antibody - Additional Information**

**Gene ID** 11218

**Other Names**

Probable ATP-dependent RNA helicase DDX20, 3.6.1.15, 3.6.4.13, Component of gems 3, DEAD box protein 20, DEAD box protein DP 103, Gemin-3, DDX20, DP103, GEMIN3

**Calculated MW**

100 kDa KDa

**Application Details**

WB 1:500-1:2000<br>IHC 1:50-1:200<br>ICC/IF 1:50-1:200<br>FC 1:100

**Contents**

Rabbit IgG in phosphate buffered saline, pH 7.4, 150mM NaCl, 0.02% sodium azide and 50% glycerol, 0.4-0.5mg/ml BSA.

**Immunogen**

A synthesized peptide derived from human Gemin 3

**Purification**

Affinity-chromatography

**Storage**

**Store at -20°C for one year. For short term storage and frequent use, store at 4°C for up to one month. Avoid repeated freeze-thaw cycles.**

**Anti-Gemin 3 Rabbit Monoclonal Antibody - Protein Information**

**Name** DDX20

**Synonyms** DP103, GEMIN3**Function**

The SMN complex catalyzes the assembly of small nuclear ribonucleoproteins (snRNPs), the building blocks of the spliceosome, and thereby plays an important role in the splicing of cellular pre- mRNAs. Most spliceosomal snRNPs contain a common set of Sm proteins SNRNPB, SNRPD1, SNRPD2, SNRPD3, SNRPE, SNRPF and SNRPG that assemble in a heptameric protein ring on the Sm site of the small nuclear RNA to form the core snRNP (Sm core). In the cytosol, the Sm proteins SNRPD1, SNRPD2, SNRPE, SNRPF and SNRPG are trapped in an inactive 6S pICln-Sm complex by the chaperone CLNS1A that controls the assembly of the core snRNP. To assemble core snRNPs, the SMN complex accepts the trapped 5Sm proteins from CLNS1A forming an intermediate. Binding of snRNA inside 5Sm triggers eviction of the SMN complex, thereby allowing binding of SNRPD3 and SNRNPB to complete assembly of the core snRNP. May also play a role in the metabolism of small nucleolar ribonucleoprotein (snoRNPs).

**Cellular Location**

Cytoplasm. Nucleus, gem Note=Localized in subnuclear structures next to coiled bodies, called Gemini or Cajal bodies (Gems).

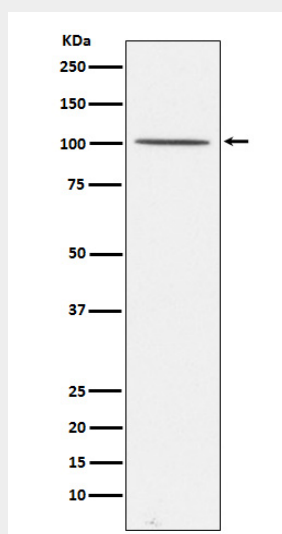
**Tissue Location**

Ubiquitous.

**Anti-Gemin 3 Rabbit Monoclonal Antibody - Protocols**

Provided below are standard protocols that you may find useful for product applications.

- [Western Blot](#)
- [Blocking Peptides](#)
- [Dot Blot](#)
- [Immunohistochemistry](#)
- [Immunofluorescence](#)
- [Immunoprecipitation](#)
- [Flow Cytometry](#)
- [Cell Culture](#)

**Anti-Gemin 3 Rabbit Monoclonal Antibody - Images**

Western blot analysis of Gemin 3 expression in 293T cell lysate.