

**Anti-PSAP Rabbit Monoclonal Antibody**  
**Catalog # ABO15851****Specification**

---

**Anti-PSAP Rabbit Monoclonal Antibody - Product Information**

Application	WB, IHC
Primary Accession	<a href="#">P07602</a>
Host	Rabbit
Isotype	IgG
Reactivity	Human
Clonality	Monoclonal
Format	Liquid

**Description**

Anti-PSAP Rabbit Monoclonal Antibody . Tested in WB, IHC applications. This antibody reacts with Human.

**Anti-PSAP Rabbit Monoclonal Antibody - Additional Information**

**Gene ID** 5660

**Other Names**

Prosaposin, Proactivator polypeptide, Saposin-A, Protein A, Saposin-B-Val, Saposin-B, Cerebroside sulfate activator, CSAct, Dispersin, Sphingolipid activator protein 1, SAP-1, Sulfatide/GM1 activator, Saposin-C, A1 activator, Co-beta-glucosidase, Glucosylceramidase activator, Sphingolipid activator protein 2, SAP-2, Saposin-D, Component C, Protein C, PSAP, GLBA, SAP1

**Calculated MW**

78 kDa KDa

**Application Details**

WB 1:1000-1:5000<br>IHC 1:50-1:200

**Contents**

Rabbit IgG in phosphate buffered saline, pH 7.4, 150mM NaCl, 0.02% sodium azide and 50% glycerol, 0.4-0.5mg/ml BSA.

**Immunogen**

A synthesized peptide derived from human PSAP

**Purification**

Affinity-chromatography

Storage

**Store at -20°C for one year. For short term storage and frequent use, store at 4°C for up to one month. Avoid repeated freeze-thaw cycles.**

**Anti-PSAP Rabbit Monoclonal Antibody - Protein Information**

**Name** PSAP

**Synonyms** GLBA, SAP1

**Function**

Saposin-A and saposin-C stimulate the hydrolysis of glucosylceramide by beta-glucosylceramidase (EC 3.2.1.45) and galactosylceramide by beta-galactosylceramidase (EC 3.2.1.46). Saposin- C apparently acts by combining with the enzyme and acidic lipid to form an activated complex, rather than by solubilizing the substrate. Saposin-D is a specific sphingomyelin phosphodiesterase activator (EC 3.1.4.12). Saposins are specific low-molecular mass non-enzymic proteins, they participate in the lysosomal degradation of sphingolipids, which takes place by the sequential action of specific hydrolases.

**Cellular Location**

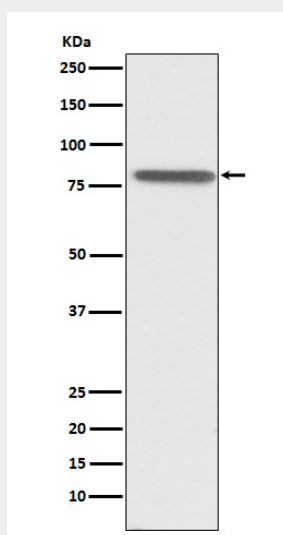
Lysosome

**Anti-PSAP Rabbit Monoclonal Antibody - Protocols**

Provided below are standard protocols that you may find useful for product applications.

- [Western Blot](#)
- [Blocking Peptides](#)
- [Dot Blot](#)
- [Immunohistochemistry](#)
- [Immunofluorescence](#)
- [Immunoprecipitation](#)
- [Flow Cytometry](#)
- [Cell Culture](#)

**Anti-PSAP Rabbit Monoclonal Antibody - Images**



Western blot analysis of PSAP expression in HepG2 cell lysate.