

**Anti-LHX3 Rabbit Monoclonal Antibody**  
**Catalog # ABO15859****Specification**

---

**Anti-LHX3 Rabbit Monoclonal Antibody - Product Information**

Application	WB, IP, FC
Primary Accession	<a href="#">Q9UBR4</a>
Host	Rabbit
Isotype	IgG
Reactivity	Rat, Human, Mouse
Clonality	Monoclonal
Format	Liquid

**Description**

Anti-LHX3 Rabbit Monoclonal Antibody . Tested in WB, IP, Flow Cytometry applications. This antibody reacts with Human, Mouse, Rat.

**Anti-LHX3 Rabbit Monoclonal Antibody - Additional Information**

**Gene ID** 8022

**Other Names**

LIM/homeobox protein Lhx3, LIM homeobox protein 3, LHX3

**Calculated MW**

43 kDa KDa

**Application Details**

WB 1:500-1:2000<br>IP 1:50<br>FC 1:50

**Contents**

Rabbit IgG in phosphate buffered saline, pH 7.4, 150mM NaCl, 0.02% sodium azide and 50% glycerol, 0.4-0.5mg/ml BSA.

**Immunogen**

A synthesized peptide derived from human LHX3

**Purification**

Affinity-chromatography

**Storage**

**Store at -20°C for one year. For short term storage and frequent use, store at 4°C for up to one month. Avoid repeated freeze-thaw cycles.**

**Anti-LHX3 Rabbit Monoclonal Antibody - Protein Information**

**Name** LHX3

**Function**

Transcription factor. Recognizes and binds to the consensus sequence motif 5'-AATTAATTA-3' in the regulatory elements of target genes, such as glycoprotein hormones alpha chain CGA and visual system homeobox CHX10, positively modulating transcription; transcription can be co-activated by LDB2. Synergistically enhances transcription from the prolactin promoter in cooperation with POU1F1/Pit-1 (By similarity). Required for the establishment of the specialized cells of the pituitary gland and the nervous system (PubMed:<a href="http://www.uniprot.org/citations/21149718" target="\_blank">21149718</a>). Involved in the development of interneurons and motor neurons in cooperation with LDB1 and ISL1 (By similarity).

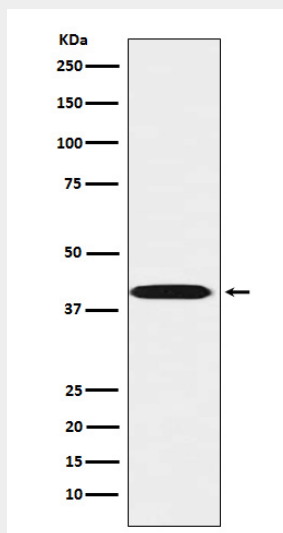
**Cellular Location**

Nucleus.

**Anti-LHX3 Rabbit Monoclonal Antibody - Protocols**

Provided below are standard protocols that you may find useful for product applications.

- [Western Blot](#)
- [Blocking Peptides](#)
- [Dot Blot](#)
- [Immunohistochemistry](#)
- [Immunofluorescence](#)
- [Immunoprecipitation](#)
- [Flow Cytometry](#)
- [Cell Culture](#)

**Anti-LHX3 Rabbit Monoclonal Antibody - Images**

Western blot analysis of LHX3 expression in Jurkat cell lysate.