

Anti-FLAP Rabbit Monoclonal Antibody
Catalog # ABO15861**Specification**

Anti-FLAP Rabbit Monoclonal Antibody - Product Information

Application	WB
Primary Accession	P20292
Host	Rabbit
Isotype	IgG
Reactivity	Human
Clonality	Monoclonal
Format	Liquid

Description

Anti-FLAP Rabbit Monoclonal Antibody . Tested in WB application. This antibody reacts with Human.

Anti-FLAP Rabbit Monoclonal Antibody - Additional Information

Gene ID 241

Other Names

Arachidonate 5-lipoxygenase-activating protein, FLAP, MK-886-binding protein, ALOX5AP, FLAP

Calculated MW

16 kDa KDa

Application Details

WB 1:500-1:2000

Contents

Rabbit IgG in phosphate buffered saline, pH 7.4, 150mM NaCl, 0.02% sodium azide and 50% glycerol, 0.4-0.5mg/ml BSA.

Immunogen

A synthesized peptide derived from human FLAP

Purification

Affinity-chromatography

Storage

Store at -20°C for one year. For short term storage and frequent use, store at 4°C for up to one month. Avoid repeated freeze-thaw cycles.

Anti-FLAP Rabbit Monoclonal Antibody - Protein Information

Name ALOX5AP

Synonyms FLAP**Function**

Required for leukotriene biosynthesis by ALOX5 (5-lipoxygenase). Anchors ALOX5 to the membrane. Binds arachidonic acid, and could play an essential role in the transfer of arachidonic acid to ALOX5. Binds to MK-886, a compound that blocks the biosynthesis of leukotrienes.

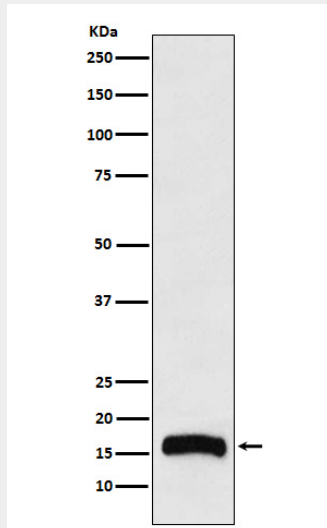
Cellular Location

Nucleus membrane; Multi-pass membrane protein. Endoplasmic reticulum membrane; Multi-pass membrane protein

Anti-FLAP Rabbit Monoclonal Antibody - Protocols

Provided below are standard protocols that you may find useful for product applications.

- [Western Blot](#)
- [Blocking Peptides](#)
- [Dot Blot](#)
- [Immunohistochemistry](#)
- [Immunofluorescence](#)
- [Immunoprecipitation](#)
- [Flow Cytometry](#)
- [Cell Culture](#)

Anti-FLAP Rabbit Monoclonal Antibody - Images

Western blot analysis of FLAP expression in THP1 cell lysate.