

Anti-Renin Rabbit Monoclonal Antibody
Catalog # ABO15874**Specification**

Anti-Renin Rabbit Monoclonal Antibody - Product Information

Application	WB, FC
Primary Accession	P00797
Host	Rabbit
Isotype	IgG
Reactivity	Human
Clonality	Monoclonal
Format	Liquid

Description

Anti-Renin Rabbit Monoclonal Antibody . Tested in WB, Flow Cytometry applications. This antibody reacts with Human.

Anti-Renin Rabbit Monoclonal Antibody - Additional Information

Gene ID 5972

Other Names

Renin, 3.4.23.15, Angiotensinogenase, REN

Calculated MW

47 kDa KDa

Application Details

WB 1:500-1:2000
FC 1:50

Contents

Rabbit IgG in phosphate buffered saline, pH 7.4, 150mM NaCl, 0.02% sodium azide and 50% glycerol, 0.4-0.5mg/ml BSA.

Immunogen

A synthesized peptide derived from human Renin

Purification

Affinity-chromatography

Storage

Store at -20°C for one year. For short term storage and frequent use, store at 4°C for up to one month. Avoid repeated freeze-thaw cycles.

Anti-Renin Rabbit Monoclonal Antibody - Protein Information

Name REN

Function

Renin is a highly specific endopeptidase, whose only known function is to generate angiotensin I from angiotensinogen in the plasma, initiating a cascade of reactions that produce an elevation of blood pressure and increased sodium retention by the kidney.

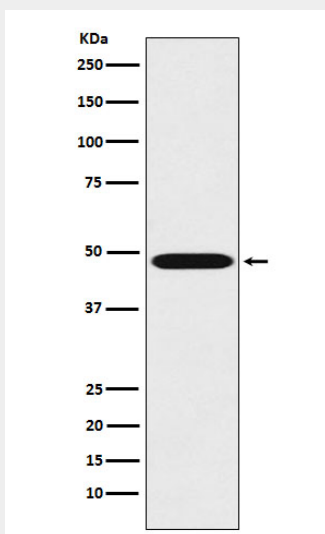
Cellular Location

Secreted. Membrane. Note=Associated to membranes via binding to ATP6AP2.

Anti-Renin Rabbit Monoclonal Antibody - Protocols

Provided below are standard protocols that you may find useful for product applications.

- [Western Blot](#)
- [Blocking Peptides](#)
- [Dot Blot](#)
- [Immunohistochemistry](#)
- [Immunofluorescence](#)
- [Immunoprecipitation](#)
- [Flow Cytometry](#)
- [Cell Culture](#)

Anti-Renin Rabbit Monoclonal Antibody - Images

Western blot analysis of Renin expression in K562 cell lysate.