

**Anti-UBE2C Rabbit Monoclonal Antibody**  
Catalog # ABO15881

**Specification**

---

**Anti-UBE2C Rabbit Monoclonal Antibody - Product Information**

Application	WB
Primary Accession	<a href="#">O00762</a>
Host	Rabbit
Isotype	IgG
Reactivity	Human
Clonality	Monoclonal
Format	Liquid

**Description**

Anti-UBE2C Rabbit Monoclonal Antibody . Tested in WB application. This antibody reacts with Human.

**Anti-UBE2C Rabbit Monoclonal Antibody - Additional Information**

**Gene ID** 11065

**Other Names**

Ubiquitin-conjugating enzyme E2 C, 2.3.2.23, (E3-independent) E2 ubiquitin-conjugating enzyme C, 2.3.2.24, E2 ubiquitin-conjugating enzyme C, UbcH10, Ubiquitin carrier protein C, Ubiquitin-protein ligase C, UBE2C, UBCH10

**Calculated MW**

20 kDa KDa

**Application Details**

WB 1:500-1:2000

**Contents**

Rabbit IgG in phosphate buffered saline, pH 7.4, 150mM NaCl, 0.02% sodium azide and 50% glycerol, 0.4-0.5mg/ml BSA.

**Immunogen**

A synthesized peptide derived from human UBE2C

**Purification**

Affinity-chromatography

**Storage**

**Store at -20°C for one year. For short term storage and frequent use, store at 4°C for up to one month. Avoid repeated freeze-thaw cycles.**

**Anti-UBE2C Rabbit Monoclonal Antibody - Protein Information**

**Name** UBE2C

**Synonyms** UBCH10

**Function**

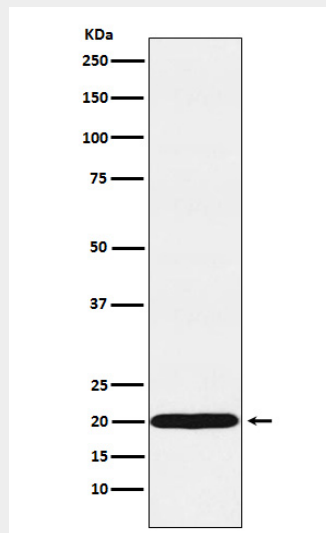
Accepts ubiquitin from the E1 complex and catalyzes its covalent attachment to other proteins. In vitro catalyzes 'Lys-11'- and 'Lys-48'-linked polyubiquitination. Acts as an essential factor of the anaphase promoting complex/cyclosome (APC/C), a cell cycle-regulated ubiquitin ligase that controls progression through mitosis. Acts by initiating 'Lys-11'-linked polyubiquitin chains on APC/C substrates, leading to the degradation of APC/C substrates by the proteasome and promoting mitotic exit.

**Anti-UBE2C Rabbit Monoclonal Antibody - Protocols**

Provided below are standard protocols that you may find useful for product applications.

- [Western Blot](#)
- [Blocking Peptides](#)
- [Dot Blot](#)
- [Immunohistochemistry](#)
- [Immunofluorescence](#)
- [Immunoprecipitation](#)
- [Flow Cytometry](#)
- [Cell Culture](#)

**Anti-UBE2C Rabbit Monoclonal Antibody - Images**



Western blot analysis of UBE2C expression in MCF7 cell lysate.