

Anti-MADCAM1 Rabbit Monoclonal Antibody
Catalog # ABO15886**Specification**

Anti-MADCAM1 Rabbit Monoclonal Antibody - Product Information

Application	WB
Primary Accession	Q13477
Host	Rabbit
Isotype	IgG
Reactivity	Human
Clonality	Monoclonal
Format	Liquid

Description

Anti-MADCAM1 Rabbit Monoclonal Antibody . Tested in WB application. This antibody reacts with Human.

Anti-MADCAM1 Rabbit Monoclonal Antibody - Additional Information

Gene ID 8174

Other Names

Mucosal addressin cell adhesion molecule 1, MAdCAM-1, hMAdCAM-1, MADCAM1

Calculated MW

40-60 kDa KDa

Application Details

WB 1:500-1:2000

Contents

Rabbit IgG in phosphate buffered saline, pH 7.4, 150mM NaCl, 0.02% sodium azide and 50% glycerol, 0.4-0.5mg/ml BSA.

Immunogen

A synthesized peptide derived from human MADCAM1

Purification

Affinity-chromatography

Storage

Store at -20°C for one year. For short term storage and frequent use, store at 4°C for up to one month. Avoid repeated freeze-thaw cycles.

Anti-MADCAM1 Rabbit Monoclonal Antibody - Protein Information

Name MADCAM1

Function

Cell adhesion leukocyte receptor expressed by mucosal venules, helps to direct lymphocyte traffic into mucosal tissues including the Peyer patches and the intestinal lamina propria. It can bind both integrin alpha-4/beta-7 and L-selectin, regulating both the passage and retention of leukocytes. Isoform 2, lacking the mucin-like domain, may be specialized in supporting integrin alpha-4/beta-7-dependent adhesion strengthening, independent of L-selectin binding.

Cellular Location

Membrane; Single-pass type I membrane protein.

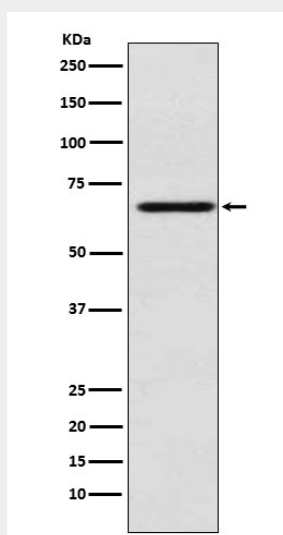
Tissue Location

Highly expressed on high endothelial venules (HEV) and lamina propria venules found in the small intestine, and to a lesser extent in the colon and spleen. Very low levels of expression found in pancreas and brain. Not expressed in the thymus, prostate, ovaries, testis, heart, placenta, lung, liver, skeletal muscle, kidney or peripheral blood leukocytes.

Anti-MADCAM1 Rabbit Monoclonal Antibody - Protocols

Provided below are standard protocols that you may find useful for product applications.

- [Western Blot](#)
- [Blocking Peptides](#)
- [Dot Blot](#)
- [Immunohistochemistry](#)
- [Immunofluorescence](#)
- [Immunoprecipitation](#)
- [Flow Cytometry](#)
- [Cell Culture](#)

Anti-MADCAM1 Rabbit Monoclonal Antibody - Images

Western blot analysis of MADCAM1 expression in HUVEC cell lysate.