

Anti-DNAJA1 Rabbit Monoclonal Antibody
Catalog # ABO15887**Specification**

Anti-DNAJA1 Rabbit Monoclonal Antibody - Product Information

Application	WB, IP, FC
Primary Accession	P31689
Host	Rabbit
Isotype	IgG
Reactivity	Rat, Human, Mouse
Clonality	Monoclonal
Format	Liquid

Description

Anti-DNAJA1 Rabbit Monoclonal Antibody . Tested in WB, IP, Flow Cytometry applications. This antibody reacts with Human, Mouse, Rat.

Anti-DNAJA1 Rabbit Monoclonal Antibody - Additional Information

Gene ID 3301

Other Names

DnaJ homolog subfamily A member 1, DnaJ protein homolog 2, HSDJ, Heat shock 40 kDa protein 4, Heat shock protein J2, HSJ-2, Human DnaJ protein 2, hDj-2, DNAJA1, DNAJ2, HDJ2, HSJ2, HSPF4

Calculated MW

45 kDa KDa

Application Details

WB 1:1000-1:5000
IP 1:50
FC 1:50

Contents

Rabbit IgG in phosphate buffered saline, pH 7.4, 150mM NaCl, 0.02% sodium azide and 50% glycerol, 0.4-0.5mg/ml BSA.

Immunogen

A synthesized peptide derived from human DNAJA1

Purification

Affinity-chromatography

Storage

Store at -20°C for one year. For short term storage and frequent use, store at 4°C for up to one month. Avoid repeated freeze-thaw cycles.

Anti-DNAJA1 Rabbit Monoclonal Antibody - Protein Information

Name DNAJA1

Synonyms DNAJ2, HDJ2, HSJ2, HSPF4

Function

Co-chaperone for HSPA8/Hsc70 (PubMed:10816573). Stimulates ATP hydrolysis, but not the folding of unfolded proteins mediated by HSPA1A (in vitro) (PubMed:24318877). Plays a role in protein transport into mitochondria via its role as co-chaperone. Functions as a co-chaperone for HSPA1B and negatively regulates the translocation of BAX from the cytosol to mitochondria in response to cellular stress, thereby protecting cells against apoptosis (PubMed:14752510). Promotes apoptosis in response to cellular stress mediated by exposure to anisomycin or UV (PubMed:24512202).

Cellular Location

Membrane; Lipid- anchor. Cytoplasm. Microsome. Nucleus. Cytoplasm, perinuclear region. Mitochondrion Note=Primarily associated with microsomes. A minor proportion is associated with mitochondria (By similarity). Primarily cytoplasmic. A minor proportion is associated with nuclei.

Tissue Location

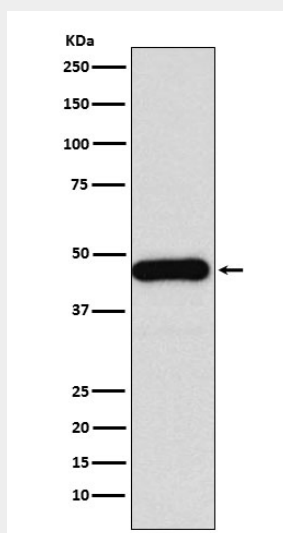
Ubiquitous. Isoform 2 is highly expressed in testis and lung, but detected at low levels in thymus, prostate, colon and liver.

Anti-DNAJA1 Rabbit Monoclonal Antibody - Protocols

Provided below are standard protocols that you may find useful for product applications.

- [Western Blot](#)
- [Blocking Peptides](#)
- [Dot Blot](#)
- [Immunohistochemistry](#)
- [Immunofluorescence](#)
- [Immunoprecipitation](#)
- [Flow Cytometry](#)
- [Cell Culture](#)

Anti-DNAJA1 Rabbit Monoclonal Antibody - Images



Western blot analysis of DNAJA1 expression in Jurkat cell lysate.