

**Anti-PLTP Rabbit Monoclonal Antibody**  
**Catalog # ABO15891****Specification**

---

**Anti-PLTP Rabbit Monoclonal Antibody - Product Information**

Application	WB
Primary Accession	<a href="#">P55058</a>
Host	Rabbit
Isotype	IgG
Reactivity	Rat, Human
Clonality	Monoclonal
Format	Liquid

**Description**

Anti-PLTP Rabbit Monoclonal Antibody . Tested in WB application. This antibody reacts with Human, Rat.

**Anti-PLTP Rabbit Monoclonal Antibody - Additional Information**

**Gene ID** 5360

**Other Names**

Phospholipid transfer protein, Lipid transfer protein II, PLTP

**Calculated MW**

80 kDa KDa

**Application Details**

WB 1:500-1:2000

**Contents**

Rabbit IgG in phosphate buffered saline, pH 7.4, 150mM NaCl, 0.02% sodium azide and 50% glycerol, 0.4-0.5mg/ml BSA.

**Immunogen**

A synthesized peptide derived from human PLTP

**Purification**

Affinity-chromatography

**Storage**

**Store at -20°C for one year. For short term storage and frequent use, store at 4°C for up to one month. Avoid repeated freeze-thaw cycles.**

**Anti-PLTP Rabbit Monoclonal Antibody - Protein Information**

**Name** PLTP

### Function

Mediates the transfer of phospholipids and free cholesterol from triglyceride-rich lipoproteins (low density lipoproteins or LDL and very low density lipoproteins or VLDL) into high-density lipoproteins (HDL) as well as the exchange of phospholipids between triglyceride-rich lipoproteins themselves (PubMed: [11013307](http://www.uniprot.org/citations/11013307)), PubMed: [19321130](http://www.uniprot.org/citations/19321130)), PubMed: [21515415](http://www.uniprot.org/citations/21515415)), PubMed: [29883800](http://www.uniprot.org/citations/29883800)), PubMed: [7654777](http://www.uniprot.org/citations/7654777)), PubMed: [9132017](http://www.uniprot.org/citations/9132017)), PubMed: [9132017](http://www.uniprot.org/citations/9132017)). Facilitates the transfer of a spectrum of different lipid molecules, including diacylglycerol, phosphatidic acid, sphingomyelin, phosphatidylcholine, phosphatidylinositol, phosphatidylglycerol, cerebroside and phosphatidyl ethanolamine (PubMed: [9132017](http://www.uniprot.org/citations/9132017)). Plays an important role in HDL remodeling which involves modulating the size and composition of HDL (PubMed: [29883800](http://www.uniprot.org/citations/29883800)). Also plays a key role in the uptake of cholesterol from peripheral cells and tissues that is subsequently transported to the liver for degradation and excretion (PubMed: [21736953](http://www.uniprot.org/citations/21736953)). Two distinct forms of PLTP exist in plasma: an active form that can transfer phosphatidylcholine from phospholipid vesicles to HDL, and an inactive form that lacks this capability (PubMed: [11013307](http://www.uniprot.org/citations/11013307)).

### Cellular Location

Secreted. Nucleus. Note=Nuclear export is XPO1/CRM1- dependent.

### Tissue Location

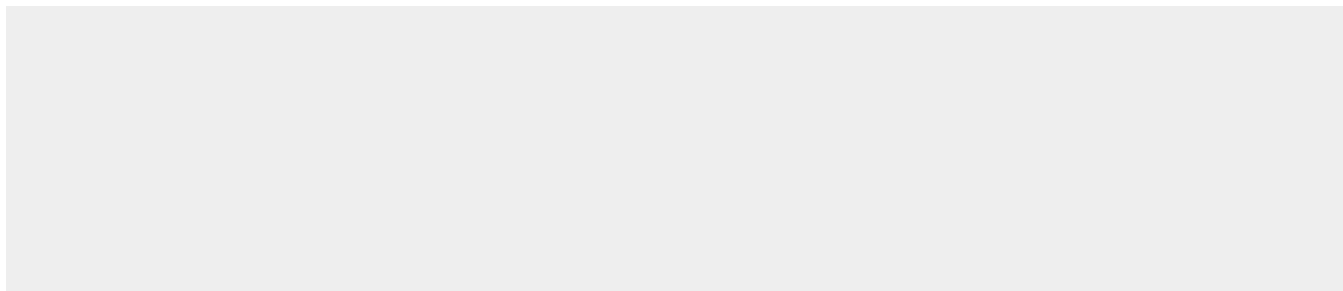
Widely expressed. Highest level of expression in the ovary, thymus and placenta, with moderate levels found in the pancreas, small intestine, testis, lung and prostate. Low level expression in the kidney, liver and spleen, with very low levels found in the heart, colon, skeletal muscle, leukocytes and brain. Expressed in the cortical neurons.

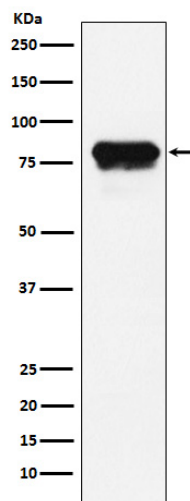
### Anti-PLTP Rabbit Monoclonal Antibody - Protocols

Provided below are standard protocols that you may find useful for product applications.

- [Western Blot](#)
- [Blocking Peptides](#)
- [Dot Blot](#)
- [Immunohistochemistry](#)
- [Immunofluorescence](#)
- [Immunoprecipitation](#)
- [Flow Cytometry](#)
- [Cell Culture](#)

### Anti-PLTP Rabbit Monoclonal Antibody - Images





Western blot analysis of PLTP expression in HeLa cell lysate.