

**Anti-Cystatin A Rabbit Monoclonal Antibody**  
**Catalog # ABO15893****Specification**

---

**Anti-Cystatin A Rabbit Monoclonal Antibody - Product Information**

Application	WB, FC
Primary Accession	<a href="#">P01040</a>
Host	Rabbit
Isotype	IgG
Reactivity	Rat, Human, Mouse
Clonality	Monoclonal
Format	Liquid

**Description**

Anti-Cystatin A Rabbit Monoclonal Antibody . Tested in WB, Flow Cytometry applications. This antibody reacts with Human, Mouse, Rat.

**Anti-Cystatin A Rabbit Monoclonal Antibody - Additional Information**

**Gene ID** 1475

**Other Names**

Cystatin-A, Cystatin-AS, Stefin-A, Cystatin-A, N-terminally processed, CSTA, STF1, STFA

**Calculated MW**

13 kDa KDa

**Application Details**

WB 1:500-1:2000<br>FC 1:50

**Contents**

Rabbit IgG in phosphate buffered saline, pH 7.4, 150mM NaCl, 0.02% sodium azide and 50% glycerol, 0.4-0.5mg/ml BSA.

**Immunogen**

A synthesized peptide derived from human Cystatin A

**Purification**

Affinity-chromatography

**Storage**

**Store at -20°C for one year. For short term storage and frequent use, store at 4°C for up to one month. Avoid repeated freeze-thaw cycles.**

**Anti-Cystatin A Rabbit Monoclonal Antibody - Protein Information**

**Name** CSTA

**Synonyms** STF1, STFA

**Function**

This is an intracellular thiol proteinase inhibitor. Has an important role in desmosome-mediated cell-cell adhesion in the lower levels of the epidermis.

**Cellular Location**

Cytoplasm.

**Tissue Location**

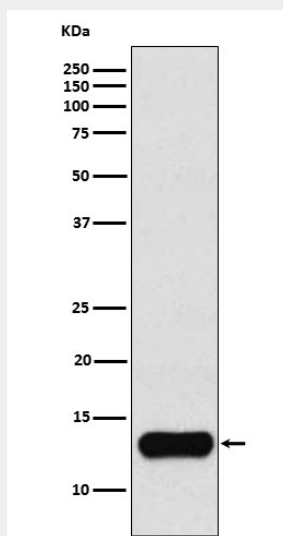
Expressed in the skin throughout the epidermis.

**Anti-Cystatin A Rabbit Monoclonal Antibody - Protocols**

Provided below are standard protocols that you may find useful for product applications.

- [Western Blot](#)
- [Blocking Peptides](#)
- [Dot Blot](#)
- [Immunohistochemistry](#)
- [Immunofluorescence](#)
- [Immunoprecipitation](#)
- [Flow Cytometry](#)
- [Cell Culture](#)

**Anti-Cystatin A Rabbit Monoclonal Antibody - Images**



Western blot analysis of Cystatin A expression in K562 cell lysate.