

Anti-IRF4 Rabbit Monoclonal Antibody
Catalog # ABO15899**Specification****Anti-IRF4 Rabbit Monoclonal Antibody - Product Information**

Application	WB, IHC, IP
Primary Accession	Q15306
Host	Rabbit
Isotype	IgG
Reactivity	Human
Clonality	Monoclonal
Format	Liquid

Description

Anti-IRF4 Rabbit Monoclonal Antibody . Tested in WB, IHC, IP applications. This antibody reacts with Human.

Anti-IRF4 Rabbit Monoclonal Antibody - Additional Information

Gene ID 3662

Other Names

Interferon regulatory factor 4, IRF-4, Lymphocyte-specific interferon regulatory factor, LSIRF, Multiple myeloma oncogene 1, NF-EM5, IRF4, MUM1

Calculated MW

52 kDa KDa

Application Details

WB 1:500-1:2000
IHC 1:50-1:200
IP 1:50

Contents

Rabbit IgG in phosphate buffered saline, pH 7.4, 150mM NaCl, 0.02% sodium azide and 50% glycerol, 0.4-0.5mg/ml BSA.

Immunogen

A synthesized peptide derived from human IRF4

Purification

Affinity-chromatography

Storage

Store at -20°C for one year. For short term storage and frequent use, store at 4°C for up to one month. Avoid repeated freeze-thaw cycles.

Anti-IRF4 Rabbit Monoclonal Antibody - Protein Information

Name IRF4 {ECO:0000303|PubMed:15489334, ECO:0000303|PubMed:8921401}

Function

Transcriptional activator. Binds to the interferon-stimulated response element (ISRE) of the MHC class I promoter. Binds the immunoglobulin lambda light chain enhancer, together with PU.1. Probably plays a role in ISRE-targeted signal transduction mechanisms specific to lymphoid cells. Involved in CD8(+) dendritic cell differentiation by forming a complex with the BATF-JUNB heterodimer in immune cells, leading to recognition of AICE sequence (5'-TGAnTCA/GAAA- 3'), an immune-specific regulatory element, followed by cooperative binding of BATF and IRF4 and activation of genes.

Cellular Location

Nucleus. Cytoplasm

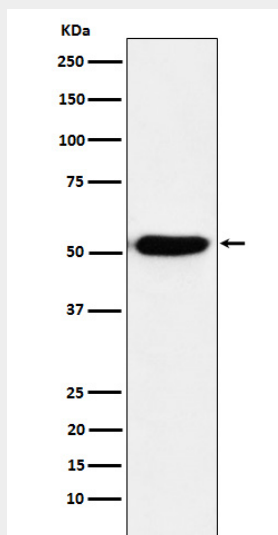
Tissue Location

Lymphoid cells.

Anti-IRF4 Rabbit Monoclonal Antibody - Protocols

Provided below are standard protocols that you may find useful for product applications.

- [Western Blot](#)
- [Blocking Peptides](#)
- [Dot Blot](#)
- [Immunohistochemistry](#)
- [Immunofluorescence](#)
- [Immunoprecipitation](#)
- [Flow Cytometry](#)
- [Cell Culture](#)

Anti-IRF4 Rabbit Monoclonal Antibody - Images

Western blot analysis of IRF4 expression in Ramos cell lysate.