

## Anti-SEN2 Rabbit Monoclonal Antibody Catalog # ABO15900

### Specification

---

#### Anti-SEN2 Rabbit Monoclonal Antibody - Product Information

Application	WB, IHC, IF, ICC
Primary Accession	<a href="#">Q9HC62</a>
Host	Rabbit
Isotype	IgG
Reactivity	Human
Clonality	Monoclonal
Format	Liquid

#### Description

Anti-SEN2 Rabbit Monoclonal Antibody . Tested in WB, IHC, ICC/IF applications. This antibody reacts with Human.

#### Anti-SEN2 Rabbit Monoclonal Antibody - Additional Information

Gene ID 59343

#### Other Names

Sentrin-specific protease 2, 3.4.22.-, Axam2, SENP2 {ECO:0000303|PubMed:10718198, ECO:0000312|HGNC:HGNC:23116}

#### Calculated MW

68 kDa KDa

#### Application Details

WB 1:500-1:2000<br>IHC 1:50-1:200<br>ICC/IF 1:50-1:200

#### Contents

Rabbit IgG in phosphate buffered saline, pH 7.4, 150mM NaCl, 0.02% sodium azide and 50% glycerol, 0.4-0.5mg/ml BSA.

#### Immunogen

A synthesized peptide derived from human SENP2

#### Purification

Affinity-chromatography

#### Storage

Store at -20°C for one year. For short term storage and frequent use, store at 4°C for up to one month. Avoid repeated freeze-thaw cycles.

#### Anti-SEN2 Rabbit Monoclonal Antibody - Protein Information

Name SENP2 {ECO:0000303|PubMed:10718198, ECO:0000312|HGNC:HGNC:23116}

## Function

Protease that catalyzes two essential functions in the SUMO pathway (PubMed:<a href="http://www.uniprot.org/citations/11896061" target="\_blank">11896061</a>, PubMed:<a href="http://www.uniprot.org/citations/12192048" target="\_blank">12192048</a>, PubMed:<a href="http://www.uniprot.org/citations/15296745" target="\_blank">15296745</a>, PubMed:<a href="http://www.uniprot.org/citations/20194620" target="\_blank">20194620</a>, PubMed:<a href="http://www.uniprot.org/citations/21965678" target="\_blank">21965678</a>). The first is the hydrolysis of an alpha-linked peptide bond at the C-terminal end of the small ubiquitin- like modifier (SUMO) propeptides, SUMO1, SUMO2 and SUMO3 leading to the mature form of the proteins (PubMed:<a href="http://www.uniprot.org/citations/15296745" target="\_blank">15296745</a>). The second is the deconjugation of SUMO1, SUMO2 and SUMO3 from targeted proteins, by cleaving an epsilon-linked peptide bond between the C-terminal glycine of the mature SUMO and the lysine epsilon-amino group of the target protein (PubMed:<a href="http://www.uniprot.org/citations/15296745" target="\_blank">15296745</a>, PubMed:<a href="http://www.uniprot.org/citations/20194620" target="\_blank">20194620</a>, PubMed:<a href="http://www.uniprot.org/citations/21965678" target="\_blank">21965678</a>). May down-regulate CTNNB1 levels and thereby modulate the Wnt pathway (By similarity). Deconjugates SUMO2 from MTA1 (PubMed:<a href="http://www.uniprot.org/citations/21965678" target="\_blank">21965678</a>). Plays a dynamic role in adipogenesis by desumoylating and promoting the stabilization of CEBPB (PubMed:<a href="http://www.uniprot.org/citations/20194620" target="\_blank">20194620</a>). Acts as a regulator of the cGAS-STING pathway by catalyzing desumoylation of CGAS and STING1 during the late phase of viral infection (By similarity).

## Cellular Location

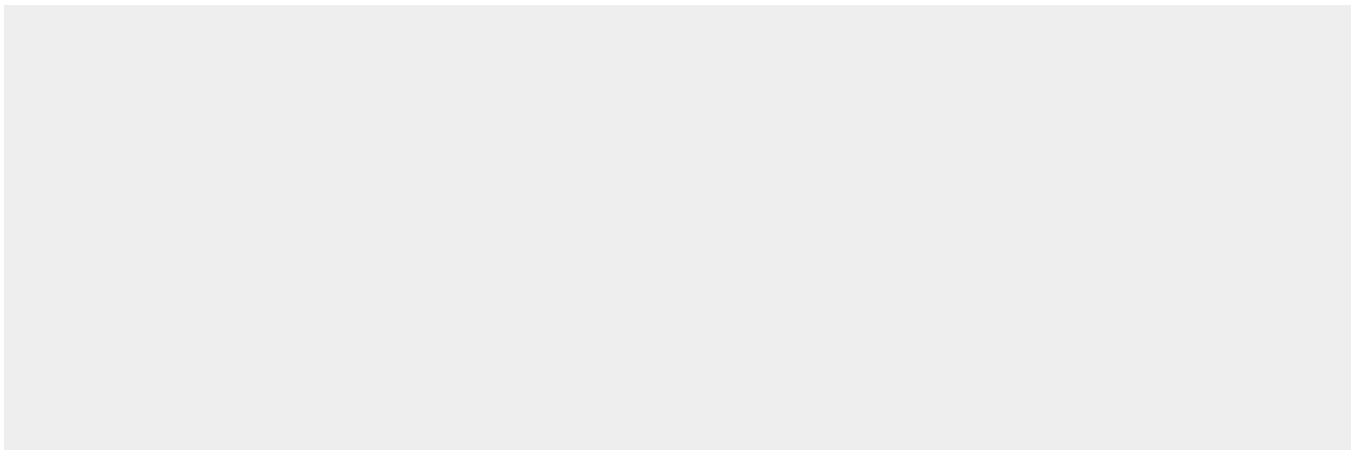
Nucleus, nuclear pore complex. Nucleus membrane; Peripheral membrane protein; Nucleoplasmic side. Cytoplasm Note=Shuttles between cytoplasm and nucleus

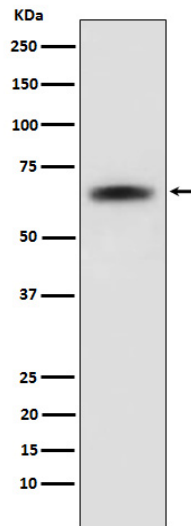
## Anti-SENP2 Rabbit Monoclonal Antibody - Protocols

Provided below are standard protocols that you may find useful for product applications.

- [Western Blot](#)
- [Blocking Peptides](#)
- [Dot Blot](#)
- [Immunohistochemistry](#)
- [Immunofluorescence](#)
- [Immunoprecipitation](#)
- [Flow Cytometry](#)
- [Cell Culture](#)

## Anti-SENP2 Rabbit Monoclonal Antibody - Images





Western blot analysis of SENP2 expression in 293T cell lysate.