

Anti-CCL21 Rabbit Monoclonal Antibody
Catalog # ABO15908**Specification**

Anti-CCL21 Rabbit Monoclonal Antibody - Product Information

Application	WB
Primary Accession	O00585
Host	Rabbit
Isotype	IgG
Reactivity	Human
Clonality	Monoclonal
Format	Liquid

Description

Anti-CCL21 Rabbit Monoclonal Antibody . Tested in WB application. This antibody reacts with Human.

Anti-CCL21 Rabbit Monoclonal Antibody - Additional Information

Gene ID 6366

Other Names

C-C motif chemokine 21, 6Ckine, Beta-chemokine exodus-2, Secondary lymphoid-tissue chemokine, SLC, Small-inducible cytokine A21, CCL21, SCYA21

Calculated MW

15 kDa KDa

Application Details

WB 1:500-1:2000

Contents

Rabbit IgG in phosphate buffered saline, pH 7.4, 150mM NaCl, 0.02% sodium azide and 50% glycerol, 0.4-0.5mg/ml BSA.

Immunogen

A synthesized peptide derived from human CCL21

Purification

Affinity-chromatography

Storage

Store at -20°C for one year. For short term storage and frequent use, store at 4°C for up to one month. Avoid repeated freeze-thaw cycles.

Anti-CCL21 Rabbit Monoclonal Antibody - Protein Information

Name CCL21

Synonyms SCYA21**Function**

Inhibits hemopoiesis and stimulates chemotaxis. Chemotactic in vitro for thymocytes and activated T-cells, but not for B-cells, macrophages, or neutrophils. Shows preferential activity towards naive T-cells. May play a role in mediating homing of lymphocytes to secondary lymphoid organs. Binds to atypical chemokine receptor ACKR4 and mediates the recruitment of beta-arrestin (ARRB1/2) to ACKR4.

Cellular Location

Secreted.

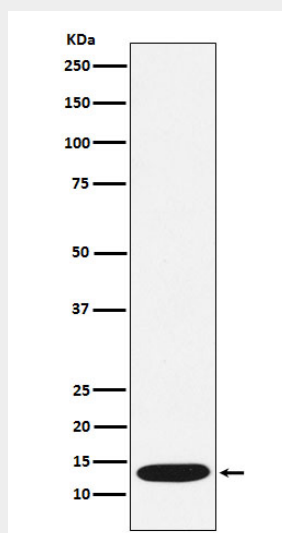
Tissue Location

Highly expressed in high endothelial venules of lymph nodes, spleen and appendix. Intermediate levels found in small intestine, thyroid gland and trachea. Low level expression in thymus, bone marrow, liver, and pancreas. Also found in tonsil, fetal heart and fetal spleen

Anti-CCL21 Rabbit Monoclonal Antibody - Protocols

Provided below are standard protocols that you may find useful for product applications.

- [Western Blot](#)
- [Blocking Peptides](#)
- [Dot Blot](#)
- [Immunohistochemistry](#)
- [Immunofluorescence](#)
- [Immunoprecipitation](#)
- [Flow Cytometry](#)
- [Cell Culture](#)

Anti-CCL21 Rabbit Monoclonal Antibody - Images

Western blot analysis of CCL21 expression in Human CCL21 recombinant protein lysate.