

Anti-ANGPTL3 Rabbit Monoclonal Antibody
Catalog # ABO15909**Specification**

Anti-ANGPTL3 Rabbit Monoclonal Antibody - Product Information

Application	WB, IF, ICC
Primary Accession	Q9Y5C1
Host	Rabbit
Isotype	IgG
Reactivity	Rat, Human, Mouse
Clonality	Monoclonal
Format	Liquid

Description

Anti-ANGPTL3 Rabbit Monoclonal Antibody . Tested in WB, ICC/IF applications. This antibody reacts with Human, Mouse, Rat.

Anti-ANGPTL3 Rabbit Monoclonal Antibody - Additional Information

Gene ID 27329

Other Names

Angiopoietin-related protein 3, Angiopoietin-5, ANG-5, Angiopoietin-like protein 3, ANGPTL3(17-221), ANGPTL3(17-224), ANGPTL3, ANGPT5

Calculated MW

54 kDa KDa

Application Details

WB 1:500-1:2000
ICC/IF 1:50-1:200

Contents

Rabbit IgG in phosphate buffered saline, pH 7.4, 150mM NaCl, 0.02% sodium azide and 50% glycerol, 0.4-0.5mg/ml BSA.

Immunogen

A synthesized peptide derived from human ANGPTL3

Purification

Affinity-chromatography

Storage

Store at -20°C for one year. For short term storage and frequent use, store at 4°C for up to one month. Avoid repeated freeze-thaw cycles.

Anti-ANGPTL3 Rabbit Monoclonal Antibody - Protein Information

Name ANGPTL3

Synonyms ANGPT5

Function

Acts in part as a hepatokine that is involved in regulation of lipid and glucose metabolism (PubMed:11788823, PubMed:12909640, PubMed:23661675, PubMed:25495645). Proposed to play a role in the trafficking of energy substrates to either storage or oxidative tissues in response to food intake (By similarity). Has a stimulatory effect on plasma triglycerides (TG), which is achieved by suppressing plasma TG clearance via inhibition of LPL activity. The inhibition of LPL activity appears to be an indirect mechanism involving recruitment of proprotein convertases PCSK6 and FURIN to LPL leading to cleavage and dissociation of LPL from the cell surface; the function does not require ANGPTL3 proteolytic cleavage but seems to be mediated by the N- terminal domain, and is not inhibited by GPIHBP1 (PubMed:12097324, PubMed:19318355, PubMed:20581395). Can inhibit endothelial lipase, causing increased plasma levels of high density lipoprotein (HDL) cholesterol and phospholipids (PubMed:17110602, PubMed:19028676). Can bind to adipocytes to activate lipolysis, releasing free fatty acids and glycerol (PubMed:12565906). Suppresses LPL specifically in oxidative tissues which is required to route very low density lipoprotein (VLDL)-TG to white adipose tissue (WAT) for storage in response to food; the function may involve cooperation with circulating, liver-derived ANGPTL8 and ANGPTL4 expression in WAT (By similarity). Contributes to lower plasma levels of low density lipoprotein (LDL)-cholesterol by a mechanism that is independent of the canonical pathway implicating APOE and LDLR. May stimulate hypothalamic LPL activity (By similarity).

Cellular Location

Secreted {ECO:0000250, ECO:0000305|PubMed:11877390}. Cell projection, lamellipodium {ECO:0000250|UniProtKB:Q9R182}. Note=Colocalized with HSPG2 and activated ITGB3 on podocytes. {ECO:0000250|UniProtKB:Q9R182}

Tissue Location

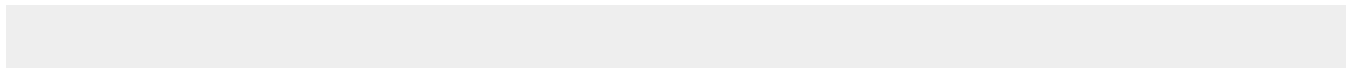
Expressed principally in liver. Weakly expressed in kidney. Binds to adipocytes. Increased expression and colocalization with activated ITGB3 in glomeruli of patients with nephrotic syndrome showing effaced podocyte foot processes (at protein level)

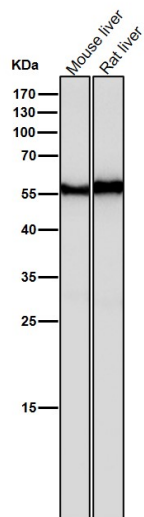
Anti-ANGPTL3 Rabbit Monoclonal Antibody - Protocols

Provided below are standard protocols that you may find useful for product applications.

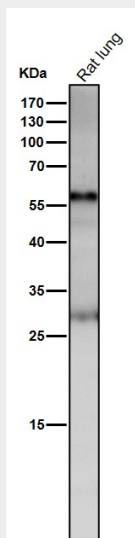
- [Western Blot](#)
- [Blocking Peptides](#)
- [Dot Blot](#)
- [Immunohistochemistry](#)
- [Immunofluorescence](#)
- [Immunoprecipitation](#)
- [Flow Cytometry](#)
- [Cell Culture](#)

Anti-ANGPTL3 Rabbit Monoclonal Antibody - Images

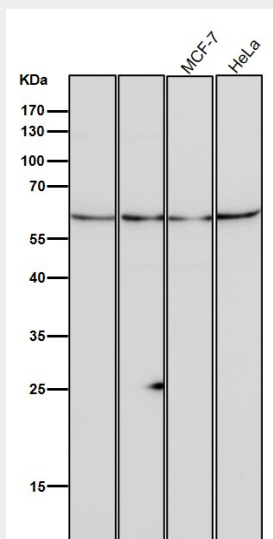




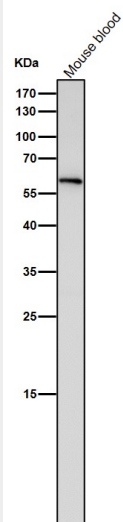
All lanes use the Antibody at 1:500 dilution for 1 hour at room temperature.



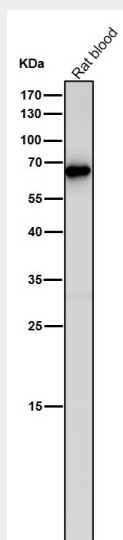
All lanes use the Antibody at 1:500 dilution for 1 hour at room temperature.



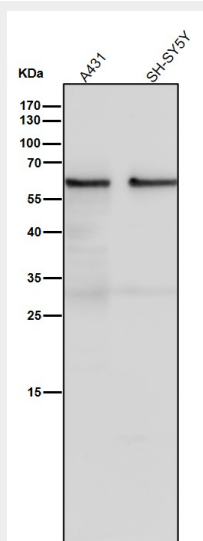
All lanes use the Antibody at 1:500 dilution for 1 hour at room temperature.



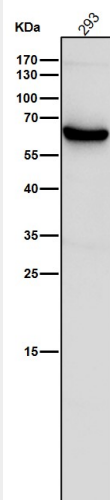
All lanes use the Antibody at 1:500 dilution for 1 hour at room temperature.



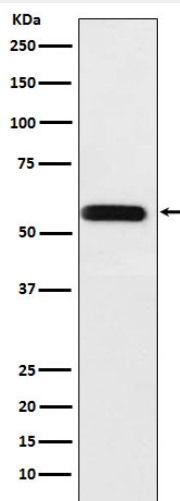
All lanes use the Antibody at 1:500 dilution for 1 hour at room temperature.



All lanes use the Antibody at 1:500 dilution for 1 hour at room temperature.



All lanes use the Antibody at 1:500 dilution for 1 hour at room temperature.



Western blot analysis of ANGPTL3 expression in A375 cell lysate.