

**Anti-Desmoglein 3 Rabbit Monoclonal Antibody**  
**Catalog # ABO15911****Specification**

---

**Anti-Desmoglein 3 Rabbit Monoclonal Antibody - Product Information**

Application	WB
Primary Accession	<a href="#">P32926</a>
Host	Rabbit
Isotype	IgG
Reactivity	Human
Clonality	Monoclonal
Format	Liquid

**Description**

Anti-Desmoglein 3 Rabbit Monoclonal Antibody . Tested in WB application. This antibody reacts with Human.

**Anti-Desmoglein 3 Rabbit Monoclonal Antibody - Additional Information**

**Gene ID** 1830

**Other Names**

Desmoglein-3, 130 kDa pemphigus vulgaris antigen, PVA, Cadherin family member 6, DSG3 ([http://www.genenames.org/cgi-bin/gene\\_symbol\\_report?hgnc\\_id=3050](http://www.genenames.org/cgi-bin/gene_symbol_report?hgnc_id=3050)) target="\_blank">HGNC:3050</a>), CDHF6

**Calculated MW**

130 kDa KDa

**Application Details**

WB 1:500-1:2000

**Contents**

Rabbit IgG in phosphate buffered saline, pH 7.4, 150mM NaCl, 0.02% sodium azide and 50% glycerol, 0.4-0.5mg/ml BSA.

**Immunogen**

A synthesized peptide derived from human Desmoglein 3

**Purification**

Affinity-chromatography

**Storage**

**Store at -20°C for one year. For short term storage and frequent use, store at 4°C for up to one month. Avoid repeated freeze-thaw cycles.**

**Anti-Desmoglein 3 Rabbit Monoclonal Antibody - Protein Information**

**Name** DSG3 ([HGNC:3050](#))

**Synonyms** CDHF6

### Function

A component of desmosome cell-cell junctions which are required for positive regulation of cellular adhesion (PubMed:<a href="http://www.uniprot.org/citations/31835537" target="\_blank">31835537</a>). Required for adherens and desmosome junction assembly in response to mechanical force in keratinocytes (PubMed:<a href="http://www.uniprot.org/citations/31835537" target="\_blank">31835537</a>). Required for desmosome-mediated cell-cell adhesion of cells surrounding the telogen hair club and the basal layer of the outer root sheath epithelium, consequently is essential for the anchoring of telogen hairs in the hair follicle (PubMed:<a href="http://www.uniprot.org/citations/9701552" target="\_blank">9701552</a>). Required for the maintenance of the epithelial barrier via promoting desmosome-mediated intercellular attachment of suprabasal epithelium to basal cells (By similarity). May play a role in the protein stability of the desmosome plaque components DSP, JUP, PKP1, PKP2 and PKP3 (PubMed:<a href="http://www.uniprot.org/citations/22294297" target="\_blank">22294297</a>). Required for YAP1 localization at the plasma membrane in keratinocytes in response to mechanical strain, via the formation of an interaction complex composed of DSG3, PKP1 and YWHAG (PubMed:<a href="http://www.uniprot.org/citations/31835537" target="\_blank">31835537</a>). May also be involved in the positive regulation of YAP1 target gene transcription and as a result cell proliferation (PubMed:<a href="http://www.uniprot.org/citations/31835537" target="\_blank">31835537</a>). Positively regulates cellular contractility and cell junction formation via organization of cortical F-actin bundles and anchoring of actin to tight junctions, in conjunction with RAC1 (PubMed:<a href="http://www.uniprot.org/citations/22796473" target="\_blank">22796473</a>). The cytoplasmic pool of DSG3 is required for the localization of CDH1 and CTNNB1 at developing adherens junctions, potentially via modulation of SRC activity (PubMed:<a href="http://www.uniprot.org/citations/22294297" target="\_blank">22294297</a>). Inhibits keratinocyte migration via suppression of p38MAPK signaling, may therefore play a role in moderating wound healing (PubMed:<a href="http://www.uniprot.org/citations/26763450" target="\_blank">26763450</a>).

### Cellular Location

Cell membrane; Single-pass type I membrane protein. Cell junction, desmosome {ECO:0000250|UniProtKB:O35902}. Cytoplasm. Cell junction, tight junction. Cell junction

### Tissue Location

Expressed throughout the basal and spinous layer of the epidermis with weak expression in the granular layer (at protein level) (PubMed:19717567). Expressed in skin and mucosa (at protein level) (PubMed:22294297, PubMed:30528827). Expressed in the basal layer of the outer root sheath of the telogen hair club, specifically at the cell membrane between the apex of the cells and the surrounding hair club (at protein level) (PubMed:9701552). Expression is less abundant between the lateral margins of the outer root sheath basal cells (at protein level) (PubMed:9701552). Also expressed in the tongue, tonsil and esophagus (PubMed:16740002).

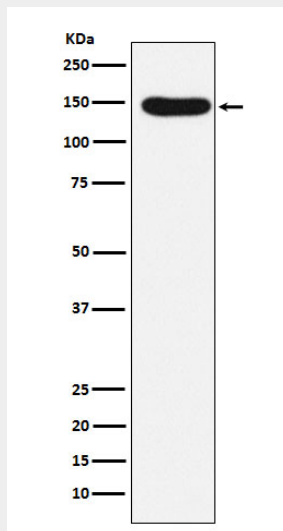
### Anti-Desmoglein 3 Rabbit Monoclonal Antibody - Protocols

Provided below are standard protocols that you may find useful for product applications.

- [Western Blot](#)
- [Blocking Peptides](#)
- [Dot Blot](#)
- [Immunohistochemistry](#)
- [Immunofluorescence](#)

- [Immunoprecipitation](#)
- [Flow Cytometry](#)
- [Cell Culture](#)

### Anti-Desmoglein 3 Rabbit Monoclonal Antibody - Images



Western blot analysis of Desmoglein 3 expression in A431 cell lysate.