

Anti-PDLIM1 Rabbit Monoclonal Antibody
Catalog # ABO15912**Specification**

Anti-PDLIM1 Rabbit Monoclonal Antibody - Product Information

Application	WB, IF, ICC, IP, FC
Primary Accession	O00151
Host	Rabbit
Isotype	IgG
Reactivity	Rat, Human, Mouse
Clonality	Monoclonal
Format	Liquid

Description

Anti-PDLIM1 Rabbit Monoclonal Antibody . Tested in WB, ICC/IF, IP, Flow Cytometry applications.
This antibody reacts with Human, Mouse, Rat.

Anti-PDLIM1 Rabbit Monoclonal Antibody - Additional Information

Gene ID 9124

Other Names

PDZ and LIM domain protein 1, C-terminal LIM domain protein 1, Elfin, LIM domain protein CLP-36, PDLIM1, CLIM1, CLP36

Calculated MW

36 kDa KDa

Application Details

WB 1:500-1:2000
ICC/IF 1:50-1:200
IP 1:50
FC 1:100

Contents

Rabbit IgG in phosphate buffered saline, pH 7.4, 150mM NaCl, 0.02% sodium azide and 50% glycerol, 0.4-0.5mg/ml BSA.

Immunogen

A synthesized peptide derived from human PDLIM1

Purification

Affinity-chromatography

Storage

Store at -20°C for one year. For short term storage and frequent use, store at 4°C for up to one month. Avoid repeated freeze-thaw cycles.

Anti-PDLIM1 Rabbit Monoclonal Antibody - Protein Information

Name PDLIM1

Synonyms CLIM1, CLP36**Function**

Cytoskeletal protein that may act as an adapter that brings other proteins (like kinases) to the cytoskeleton (PubMed:10861853). Involved in assembly, disassembly and directioning of stress fibers in fibroblasts. Required for the localization of ACTN1 and PALLD to stress fibers. Required for cell migration and in maintaining cell polarity of fibroblasts (By similarity).

Cellular Location

Cytoplasm. Cytoplasm, cytoskeleton. Cytoplasm, myofibril, sarcomere, Z line Note=Associates with actin stress fibers

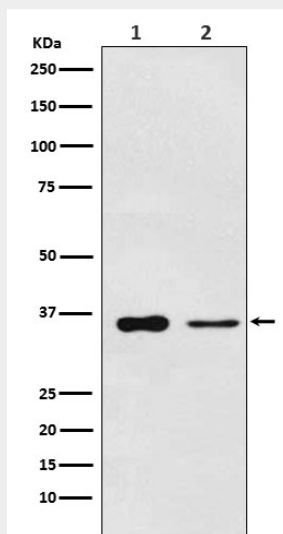
Tissue Location

Strongly expressed in the heart and skeletal muscle, moderately expressed in the spleen, small intestine, colon, placenta, and lung. A lower level expression is seen in liver, thymus, kidney, prostate and pancreas and is not found in the brain, testis, ovary, and peripheral blood leukocytes

Anti-PDLIM1 Rabbit Monoclonal Antibody - Protocols

Provided below are standard protocols that you may find useful for product applications.

- [Western Blot](#)
- [Blocking Peptides](#)
- [Dot Blot](#)
- [Immunohistochemistry](#)
- [Immunofluorescence](#)
- [Immunoprecipitation](#)
- [Flow Cytometry](#)
- [Cell Culture](#)

Anti-PDLIM1 Rabbit Monoclonal Antibody - Images

Western blot analysis of PDLIM1 expression in (1) Saos2 cell lysate; (2) Mouse lung lysate.