

**Anti-FABPI Rabbit Monoclonal Antibody**  
**Catalog # ABO15918****Specification**

---

**Anti-FABPI Rabbit Monoclonal Antibody - Product Information**

Application	WB
Primary Accession	<a href="#">P12104</a>
Host	Rabbit
Isotype	IgG
Reactivity	Rat, Human, Mouse
Clonality	Monoclonal
Format	Liquid

**Description**

Anti-FABPI Rabbit Monoclonal Antibody . Tested in WB application. This antibody reacts with Human, Mouse, Rat.

**Anti-FABPI Rabbit Monoclonal Antibody - Additional Information**

**Gene ID** 2169

**Other Names**

Fatty acid-binding protein, intestinal, Fatty acid-binding protein 2, Intestinal-type fatty acid-binding protein, I-FABP, FABP2, FABPI

**Calculated MW**

15 kDa KDa

**Application Details**

WB 1:500-1:2000

**Contents**

Rabbit IgG in phosphate buffered saline, pH 7.4, 150mM NaCl, 0.02% sodium azide and 50% glycerol, 0.4-0.5mg/ml BSA.

**Immunogen**

A synthesized peptide derived from human FABPI

**Purification**

Affinity-chromatography

Storage

**Store at -20°C for one year. For short term storage and frequent use, store at 4°C for up to one month. Avoid repeated freeze-thaw cycles.**

**Anti-FABPI Rabbit Monoclonal Antibody - Protein Information**

**Name** FABP2

## Synonyms FABPI

### Function

FABPs are thought to play a role in the intracellular transport of long-chain fatty acids and their acyl-CoA esters. FABP2 is probably involved in triglyceride-rich lipoprotein synthesis. Binds saturated long-chain fatty acids with a high affinity, but binds with a lower affinity to unsaturated long-chain fatty acids. FABP2 may also help maintain energy homeostasis by functioning as a lipid sensor.

### Cellular Location

Cytoplasm.

### Tissue Location

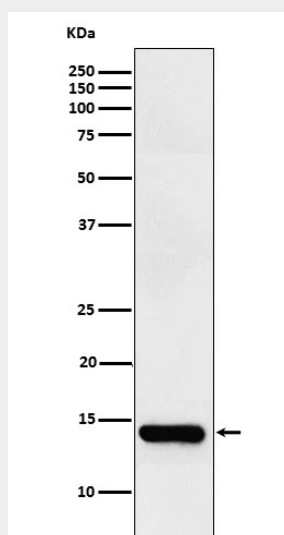
Expressed in the small intestine and at much lower levels in the large intestine. Highest expression levels in the jejunum.

## Anti-FABPI Rabbit Monoclonal Antibody - Protocols

Provided below are standard protocols that you may find useful for product applications.

- [Western Blot](#)
- [Blocking Peptides](#)
- [Dot Blot](#)
- [Immunohistochemistry](#)
- [Immunofluorescence](#)
- [Immunoprecipitation](#)
- [Flow Cytometry](#)
- [Cell Culture](#)

## Anti-FABPI Rabbit Monoclonal Antibody - Images



Western blot analysis of intestinal FABP expression in Human small intestine lysate.