

Anti-NAIP Rabbit Monoclonal Antibody
Catalog # ABO15922**Specification**

Anti-NAIP Rabbit Monoclonal Antibody - Product Information

Application	WB
Primary Accession	Q13075
Host	Rabbit
Isotype	IgG
Reactivity	Human
Clonality	Monoclonal
Format	Liquid

Description

Anti-NAIP Rabbit Monoclonal Antibody . Tested in WB application. This antibody reacts with Human.

Anti-NAIP Rabbit Monoclonal Antibody - Additional Information

Gene ID 4671

Other Names

Baculoviral IAP repeat-containing protein 1, Neuronal apoptosis inhibitory protein, NAIP, BIRC1

Calculated MW

160 kDa KDa

Application Details

WB 1:500-1:2000

Contents

Rabbit IgG in phosphate buffered saline, pH 7.4, 150mM NaCl, 0.02% sodium azide and 50% glycerol, 0.4-0.5mg/ml BSA.

Immunogen

A synthesized peptide derived from human NAIP

Purification

Affinity-chromatography

Storage

Store at -20°C for one year. For short term storage and frequent use, store at 4°C for up to one month. Avoid repeated freeze-thaw cycles.

Anti-NAIP Rabbit Monoclonal Antibody - Protein Information

Name NAIP

Synonyms BIRC1

Function

Anti-apoptotic protein which acts by inhibiting the activities of CASP3, CASP7 and CASP9. Can inhibit the autocleavage of pro-CASP9 and cleavage of pro-CASP3 by CASP9. Capable of inhibiting CASP9 autoproteolysis at 'Asp-315' and decreasing the rate of auto proteolysis at 'Asp-330'. Acts as a mediator of neuronal survival in pathological conditions. Prevents motor-neuron apoptosis induced by a variety of signals. Possible role in the prevention of spinal muscular atrophy that seems to be caused by inappropriate persistence of motor- neuron apoptosis: mutated or deleted forms of NAIP have been found in individuals with severe spinal muscular atrophy.

Tissue Location

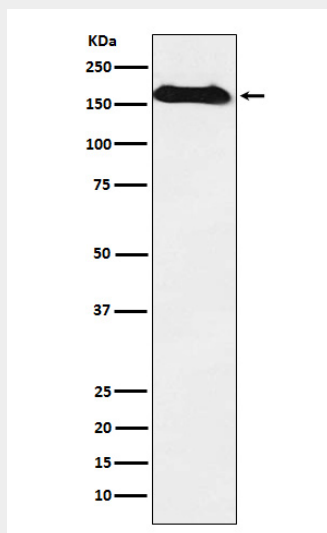
Expressed in motor neurons, but not in sensory neurons. Found in liver and placenta, and to a lesser extent in spinal cord

Anti-NAIP Rabbit Monoclonal Antibody - Protocols

Provided below are standard protocols that you may find useful for product applications.

- [Western Blot](#)
- [Blocking Peptides](#)
- [Dot Blot](#)
- [Immunohistochemistry](#)
- [Immunofluorescence](#)
- [Immunoprecipitation](#)
- [Flow Cytometry](#)
- [Cell Culture](#)

Anti-NAIP Rabbit Monoclonal Antibody - Images



Western blot analysis of NAIP expression in Human fetal kidney lysate.