

Anti-Oncostatin M Rabbit Monoclonal Antibody
Catalog # ABO15932**Specification**

Anti-Oncostatin M Rabbit Monoclonal Antibody - Product Information

Application	WB
Primary Accession	P13725
Host	Rabbit
Isotype	IgG
Reactivity	Rat, Human, Mouse
Clonality	Monoclonal
Format	Liquid

Description

Anti-Oncostatin M Rabbit Monoclonal Antibody . Tested in WB application. This antibody reacts with Human, Mouse, Rat.

Anti-Oncostatin M Rabbit Monoclonal Antibody - Additional Information

Gene ID 5008

Other Names

Oncostatin-M, OSM, OSM

Calculated MW

28 kDa KDa

Application Details

WB 1:500-1:2000

Contents

Rabbit IgG in phosphate buffered saline, pH 7.4, 150mM NaCl, 0.02% sodium azide and 50% glycerol, 0.4-0.5mg/ml BSA.

Immunogen

A synthesized peptide derived from human Oncostatin M

Purification

Affinity-chromatography

Storage

Store at -20°C for one year. For short term storage and frequent use, store at 4°C for up to one month. Avoid repeated freeze-thaw cycles.

Anti-Oncostatin M Rabbit Monoclonal Antibody - Protein Information

Name OSM

Function

Growth regulator. Inhibits the proliferation of a number of tumor cell lines. Stimulates proliferation of AIDS-KS cells. It regulates cytokine production, including IL-6, G-CSF and GM-CSF from endothelial cells. Uses both type I OSM receptor (heterodimers composed of LIFR and IL6ST) and type II OSM receptor (heterodimers composed of OSMR and IL6ST). Involved in the maturation of fetal hepatocytes, thereby promoting liver development and regeneration (By similarity).

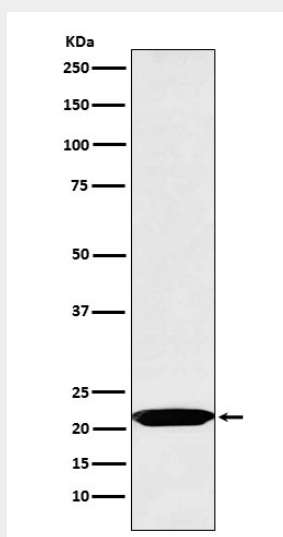
Cellular Location

Secreted.

Anti-Oncostatin M Rabbit Monoclonal Antibody - Protocols

Provided below are standard protocols that you may find useful for product applications.

- [Western Blot](#)
- [Blocking Peptides](#)
- [Dot Blot](#)
- [Immunohistochemistry](#)
- [Immunofluorescence](#)
- [Immunoprecipitation](#)
- [Flow Cytometry](#)
- [Cell Culture](#)

Anti-Oncostatin M Rabbit Monoclonal Antibody - Images

Western blot analysis of Oncostatin M expression in Jurkat cell lysate.