

Anti-RhoGAP Rabbit Monoclonal Antibody
Catalog # ABO15934**Specification**

Anti-RhoGAP Rabbit Monoclonal Antibody - Product Information

Application	WB, IHC, FC
Primary Accession	Q13017
Host	Rabbit
Isotype	IgG
Reactivity	Rat, Human, Mouse
Clonality	Monoclonal
Format	Liquid

Description

Anti-RhoGAP Rabbit Monoclonal Antibody . Tested in WB, IHC, Flow Cytometry applications. This antibody reacts with Human, Mouse, Rat.

Anti-RhoGAP Rabbit Monoclonal Antibody - Additional Information

Gene ID 394

Other Names

Rho GTPase-activating protein 5, Rho-type GTPase-activating protein 5, p190-B, ARHGAP5, RHOGAP5

Calculated MW

190 kDa KDa

Application Details

WB 1:500-1:2000
IHC 1:50-1:200
FC 1:50

Contents

Rabbit IgG in phosphate buffered saline, pH 7.4, 150mM NaCl, 0.02% sodium azide and 50% glycerol, 0.4-0.5mg/ml BSA.

Immunogen

A synthesized peptide derived from human RhoGAP

Purification

Affinity-chromatography

Storage

Store at -20°C for one year. For short term storage and frequent use, store at 4°C for up to one month. Avoid repeated freeze-thaw cycles.

Anti-RhoGAP Rabbit Monoclonal Antibody - Protein Information

Name ARHGAP5

Synonyms RHO GAP5

Function

GTPase-activating protein for Rho family members (PubMed:8537347).

Cellular Location

Cytoplasm. Cell membrane; Peripheral membrane protein. Note=Also membrane-associated in a fibrillar pattern that colocalizes with the alpha5-beta1 integrin receptor (ITGA5/ITGB1) for fibronectin.

Tissue Location

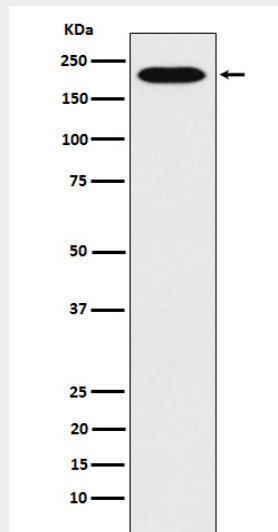
Detected in skin fibroblasts (at protein level) (PubMed:8537347).

Anti-RhoGAP Rabbit Monoclonal Antibody - Protocols

Provided below are standard protocols that you may find useful for product applications.

- [Western Blot](#)
- [Blocking Peptides](#)
- [Dot Blot](#)
- [Immunohistochemistry](#)
- [Immunofluorescence](#)
- [Immunoprecipitation](#)
- [Flow Cytometry](#)
- [Cell Culture](#)

Anti-RhoGAP Rabbit Monoclonal Antibody - Images



Western blot analysis of RhoGAP expression in HeLa cell lysate.