

Anti-Wnt5b Rabbit Monoclonal Antibody
Catalog # ABO15939**Specification**

Anti-Wnt5b Rabbit Monoclonal Antibody - Product Information

Application	WB, FC
Primary Accession	Q9H1J7
Host	Rabbit
Isotype	IgG
Reactivity	Human
Clonality	Monoclonal
Format	Liquid

Description

Anti-Wnt5b Rabbit Monoclonal Antibody . Tested in WB, Flow Cytometry applications. This antibody reacts with Human.

Anti-Wnt5b Rabbit Monoclonal Antibody - Additional Information

Gene ID 81029

Other Names

Protein Wnt-5b, WNT5B

Calculated MW

45 kDa KDa

Application Details

WB 1:500-1:2000
FC 1:50

Contents

Rabbit IgG in phosphate buffered saline, pH 7.4, 150mM NaCl, 0.02% sodium azide and 50% glycerol, 0.4-0.5mg/ml BSA.

Immunogen

A synthesized peptide derived from human Wnt5b

Purification

Affinity-chromatography

Storage

Store at -20°C for one year. For short term storage and frequent use, store at 4°C for up to one month. Avoid repeated freeze-thaw cycles.

Anti-Wnt5b Rabbit Monoclonal Antibody - Protein Information

Name WNT5B

Function

Ligand for members of the frizzled family of seven transmembrane receptors. Probable developmental protein. May be a signaling molecule which affects the development of discrete regions of tissues. Is likely to signal over only few cell diameters (By similarity).

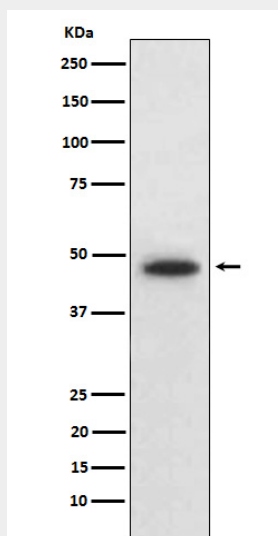
Cellular Location

Secreted, extracellular space, extracellular matrix

Anti-Wnt5b Rabbit Monoclonal Antibody - Protocols

Provided below are standard protocols that you may find useful for product applications.

- [Western Blot](#)
- [Blocking Peptides](#)
- [Dot Blot](#)
- [Immunohistochemistry](#)
- [Immunofluorescence](#)
- [Immunoprecipitation](#)
- [Flow Cytometry](#)
- [Cell Culture](#)

Anti-Wnt5b Rabbit Monoclonal Antibody - Images

Western blot analysis of Wnt5b expression in HepG2 cell lysate.