

Anti-STX1A Rabbit Monoclonal Antibody
Catalog # ABO15958**Specification**

Anti-STX1A Rabbit Monoclonal Antibody - Product Information

Application	WB, IP, FC
Primary Accession	Q16623
Host	Rabbit
Isotype	IgG
Reactivity	Rat, Human, Mouse
Clonality	Monoclonal
Format	Liquid

Description

Anti-STX1A Rabbit Monoclonal Antibody . Tested in WB, IP, Flow Cytometry applications. This antibody reacts with Human, Mouse, Rat.

Anti-STX1A Rabbit Monoclonal Antibody - Additional Information

Gene ID 6804

Other Names

Syntaxin-1A, Neuron-specific antigen HPC-1, STX1A, STX1

Calculated MW

33 kDa KDa

Application Details

WB 1:1000-1:5000
IP 1:50
FC 1:50

Contents

Rabbit IgG in phosphate buffered saline, pH 7.4, 150mM NaCl, 0.02% sodium azide and 50% glycerol, 0.4-0.5mg/ml BSA.

Immunogen

A synthesized peptide derived from human STX1A

Purification

Affinity-chromatography

Storage

Store at -20°C for one year. For short term storage and frequent use, store at 4°C for up to one month. Avoid repeated freeze-thaw cycles.

Anti-STX1A Rabbit Monoclonal Antibody - Protein Information

Name STX1A

Synonyms STX1

Function

Plays an essential role in hormone and neurotransmitter calcium-dependent exocytosis and endocytosis (PubMed:26635000). Part of the SNARE (Soluble NSF Attachment Receptor) complex composed of SNAP25, STX1A and VAMP2 which mediates the fusion of synaptic vesicles with the presynaptic plasma membrane. STX1A and SNAP25 are localized on the plasma membrane while VAMP2 resides in synaptic vesicles. The pairing of the three SNAREs from the N-terminal SNARE motifs to the C-terminal anchors leads to the formation of the SNARE complex, which brings membranes into close proximity and results in final fusion. Participates in the calcium-dependent regulation of acrosomal exocytosis in sperm (PubMed:23091057). Also plays an important role in the exocytosis of hormones such as insulin or glucagon-like peptide 1 (GLP-1) (By similarity).

Cellular Location

Cytoplasmic vesicle, secretory vesicle, synaptic vesicle membrane {ECO:0000250|UniProtKB:O35526}; Single-pass type IV membrane protein {ECO:0000250|UniProtKB:O35526}. Synapse, synaptosome {ECO:0000250|UniProtKB:O35526}. Cell membrane {ECO:0000250|UniProtKB:P32851}. Note=Colocalizes with KCNB1 at the cell membrane. {ECO:0000250|UniProtKB:P32851}

Tissue Location

[Isoform 1]: Highly expressed in embryonic spinal cord and ganglia and in adult cerebellum and cerebral cortex

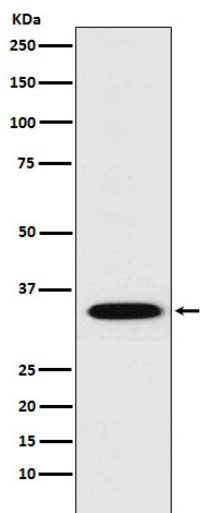
Anti-STX1A Rabbit Monoclonal Antibody - Protocols

Provided below are standard protocols that you may find useful for product applications.

- [Western Blot](#)
- [Blocking Peptides](#)
- [Dot Blot](#)
- [Immunohistochemistry](#)
- [Immunofluorescence](#)
- [Immunoprecipitation](#)
- [Flow Cytometry](#)
- [Cell Culture](#)

Anti-STX1A Rabbit Monoclonal Antibody - Images





Western blot analysis of STX1A expression in SH-SY5Y cell lysate.