

**Anti-VEGFD Rabbit Monoclonal Antibody**  
**Catalog # ABO15971****Specification**

---

**Anti-VEGFD Rabbit Monoclonal Antibody - Product Information**

Application	WB, IHC, IF, ICC, FC
Primary Accession	<a href="#">O43915</a>
Host	Rabbit
Isotype	IgG
Reactivity	Rat, Human, Mouse
Clonality	Monoclonal
Format	Liquid

**Description**

Anti-VEGFD Rabbit Monoclonal Antibody . Tested in WB, IHC, ICC/IF, Flow Cytometry applications.  
This antibody reacts with Human, Mouse, Rat.

**Anti-VEGFD Rabbit Monoclonal Antibody - Additional Information****Gene ID 2277****Other Names**

Vascular endothelial growth factor D {ECO:0000312|HGNC:HGNC:3708}, VEGF-D, c-Fos-induced growth factor, FIGF, VEGFD ([http://www.genenames.org/cgi-bin/gene\\_symbol\\_report?hgnc\\_id=3708](http://www.genenames.org/cgi-bin/gene_symbol_report?hgnc_id=3708)), FIGF

**Calculated MW**

40 kDa KDa

**Application Details**

WB 1:500-1:2000<br>IHC 1:50-1:200<br>ICC/IF 1:50-1:200<br>FC 1:50

**Contents**

Rabbit IgG in phosphate buffered saline, pH 7.4, 150mM NaCl, 0.02% sodium azide and 50% glycerol, 0.4-0.5mg/ml BSA.

**Immunogen**

A synthesized peptide derived from human VEGFD

**Purification**

Affinity-chromatography

**Storage**

**Store at -20°C for one year. For short term storage and frequent use, store at 4°C for up to one month. Avoid repeated freeze-thaw cycles.**

**Anti-VEGFD Rabbit Monoclonal Antibody - Protein Information**

**Name** VEGFD ([HGNC:3708](#))

**Synonyms** FIGF

**Function**

Growth factor active in angiogenesis, lymphangiogenesis and endothelial cell growth, stimulating their proliferation and migration and also has effects on the permeability of blood vessels. May function in the formation of the venous and lymphatic vascular systems during embryogenesis, and also in the maintenance of differentiated lymphatic endothelium in adults. Binds and activates VEGFR-2 (KDR/FLK1) and VEGFR-3 (FLT4) receptors.

**Cellular Location**

Secreted.

**Tissue Location**

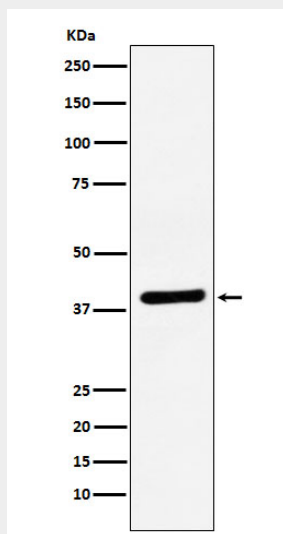
Highly expressed in lung, heart, small intestine and fetal lung, and at lower levels in skeletal muscle, colon, and pancreas

**Anti-VEGFD Rabbit Monoclonal Antibody - Protocols**

Provided below are standard protocols that you may find useful for product applications.

- [Western Blot](#)
- [Blocking Peptides](#)
- [Dot Blot](#)
- [Immunohistochemistry](#)
- [Immunofluorescence](#)
- [Immunoprecipitation](#)
- [Flow Cytometry](#)
- [Cell Culture](#)

**Anti-VEGFD Rabbit Monoclonal Antibody - Images**



Western blot analysis of VEGFD expression in Caco-2 cell lysate.